

1 **High-throughput sequencing of gut microbiota in rainbow trout (*Oncorhynchus mykiss*) fed larval and pre-**  
2 **pupae stages of black soldier fly (*Hermetia illucens*)**

3

4 David Huyben<sup>a</sup>, Aleksandar Vidaković<sup>a</sup>, Sofia Werner Hallgren<sup>a</sup> & Markus Langeland<sup>\*a</sup>

5

6 <sup>a</sup> Department of Animal Nutrition and Management, Swedish University of Agricultural Sciences, Box 7024,  
7 750 07 Uppsala, Sweden;

8 \* Corresponding author; e-mail: markus.langeland@slu.se, phone: +46-(0)18-672100

9

10 **Abstract**

11

12 Black soldier fly (*Hermetia illucens*) meal is a potential alternative to fishmeal and plant proteins in diets for  
13 farmed fish since it can be produced on organic waste substrates, requires little energy and water inputs and  
14 contains high levels of essential amino acids. Recent studies have partially replaced fishmeal with black soldier  
15 fly meal, however, research on their impact on gut microbiota of fish is limited. In a five week experiment, juvenile  
16 rainbow trout (*Oncorhynchus mykiss*) were fed either a reference diet based on fishmeal or three diets with 30%  
17 inclusion of black soldier fly meals in the form of pre-pupae, larvae or defatted-larvae. The combined luminal  
18 content and mucosa were collected from the distal intestine of three fish per tank with four tanks per diet (n=12)  
19 and 16S rRNA gene amplicons were sequenced using the Illumina MiSeq platform. Feeding the insect-based diets  
20 increased the alpha-diversity of bacteria and abundance of lactic acid bacteria, which may be due to the addition  
21 of dietary chitin. Compared with fishmeal, feeding insects resulted in higher abundance of phyla Firmicutes and  
22 Actinobacteria with lower abundance of Proteobacteria. Fish fed the full-fat meals had higher abundance of  
23 *Corynebacterium* that was attributed to its ability to produce lipase and the high content of dietary lipids as a  
24 substrate. Bacillaceae was increased in fish fed both larvae diets and unchanged in the pre-pupae diet, which  
25 indicated that life-cycle stage of the insect influenced the gut microbiota. Based on these results, we found that  
26 feeding black soldier flies increased diversity and altered the composition of gut bacteria of rainbow trout, which  
27 were further influenced by life-cycle stage and lipid content of the insect meal.

28

29 **Keywords**

30 Bacterial diversity; Aquaculture; Distal intestine; Fishmeal replacement; Illumina; Insect meal

31 **Highlights**

32

33 - Gut bacteria of rainbow trout fed black soldier fly meals were identified using high-throughput sequencing for  
34 the first time.

35

36 - Feeding larvae, pupae and defatted larval meals resulted in three different gut bacteria profiles, indicating that  
37 insect life stage and lipid content are decisive factors influencing the gut microbiota in rainbow trout.

38

39 - All three insect diets increased bacterial diversity and lactic acid bacteria that may indicate improved gut health  
40 of rainbow trout.

41

42

43 **1. Introduction**

44

45 Aquaculture will require more feed resources to produce more fish for a growing human population. Fishmeal  
46 and soy are common protein sources in aqua-feeds, but depleted ocean stocks and demand for human consumption  
47 has resulted in higher prices and reduced availability of these ingredients (Tacon, Metian, 2008). Low human-  
48 interest alternatives that require less water, land and energy resources are needed. A possible alternative is insects  
49 since they can convert organic waste substrates with high efficiency, contain high levels of protein and lipids,  
50 require low resource inputs for farming, produce low amounts of greenhouse gases and have relatively low  
51 interest from human consumers (Henry, et al., 2015; Van Huis, et al., 2013). Insects are a natural part of the diet  
52 for wild fish, especially those inhabiting coastal and inland water-bodies (Whitley, Bollens, 2014). Previous  
53 studies have found that rainbow trout (*Oncorhynchus mykiss*) fed fat-enriched black soldier fly pre-pupae can  
54 replace 25 and 50% of fishmeal without compromising growth performance (Sealey, et al., 2011; St-Hilaire, et  
55 al., 2007). Diets with 50% replacement of fishmeal with black soldier fly defatted-larvae have also resulted in  
56 similar growth performance, body indices and gut morphology of rainbow trout compared with fish fed the control  
57 diet (Renna, et al., 2017). In addition, replacement of 20-85% of fishmeal with black soldier fly has had no  
58 negative effects on growth and feed efficiency of Atlantic salmon (*Salmo salar*) (Belghit, et al., 2018; Lock, et  
59 al., 2016), turbot (*Psetta maxima*) (Kroeckel, et al., 2012), European seabass (*Dicentrarchus labrax*) (Magalhães,  
60 et al., 2017), barramundi (*Lates calcarifer*), Nile tilapia (*Oreochromis niloticus*) (Muin, et al., 2017) and yellow

61 catfish (*Pelteobagrus fulvidraco*) (Xiao, et al., 2018). However, the impact of feeding black soldier fly meal on  
62 the gut microbiota of fish is not well known.

63

64 The gut microbiota plays an important role in nutrition, immune system and health of fish (Llewellyn, et al., 2014;  
65 Wang, et al., 2018) and the feeding with alternative protein sources such as plants, mussels and microbes (i.e.  
66 yeast and microalgae) have been shown to alter diversity and abundance of gut bacteria in salmonid fishes (Desai,  
67 et al., 2012; Huyben, et al., 2018; Huyben, et al., 2017; Ingerslev, et al., 2014; Lyons, et al., 2017; Michl, et al.,  
68 2017; Nyman, et al., 2017). Recently, a study using gel electrophoresis based sequencing method has found that  
69 feeding black soldier fly meal to rainbow trout increased diversity of gut microbiota (Bruni, et al., 2018). A few  
70 studies have suggested that chitin, a long-chain polymer of N-acetylglucosamine derived from exoskeleton of  
71 insects and crustacean shells, acts as a substrate for chitinase producing bacteria that are not commonly found in  
72 the fish gut (Askarian, et al., 2012; Bruni, et al., 2018; Ringø, et al., 2012). Similarly, feeding krill-based chitin  
73 has been found to alter the gut microbiota of Atlantic salmon (Askarian, et al., 2012) and Atlantic cod (Zhou, et  
74 al., 2013). Rearing substrate, life-cycle stage and lipid content of insects have also been suspected of influencing  
75 gut microbiota (Lock, et al., 2016; Sealey, et al., 2011; Xiao, et al., 2018). New advancements in high-throughput  
76 sequencing will allow us to identify specific effects of feeding black soldier fly meals on gut microbiota of farmed  
77 fish.

78

79 The objective of this study was to investigate the effects of feeding three different black soldier fly meals on the  
80 gut microbiota of rainbow trout. Specifically, differences between insect life cycle stage (i.e. larval and pre-pupae  
81 meals) and lipid content (i.e. commercial defatted-larvae meal) on the abundance and diversity of bacteria in the  
82 distal intestine were investigated using high-throughput 16S rRNA gene amplicon sequencing on the Illumina  
83 MiSeq platform.

84

## 85 **2. Materials and methods**

86

### 87 *2.1 Fish and facilities*

88

89 The study was performed in the Aquatic Facility of the Centre for Veterinary Medicine and Animal Science at the  
90 Swedish University of Agricultural Sciences (SLU; Uppsala, Sweden). Rainbow trout ( $201.8 \pm 13.9$  g; mean  $\pm$

91 standard deviation) were acquired from a commercial producer (Vilstena fiskodling AB, Fjärdhundra, Sweden)  
92 and housed indoors in 500 L flow-through tanks. Two weeks before the experiment, 160 fish in total were  
93 randomly distributed in each of the 16 experimental tanks (10 fish per tank). The fish were acclimatised to a 12  
94 hr light cycle and fed a commercial diet (3 mm, Efico Alpha 714, BioMar A/S, Brande, Denmark). The flow-  
95 through system supplied each 200 L oval, fibreglass tank with municipal freshwater at a rate of 6 L min<sup>-1</sup>. Water  
96 was analysed on a weekly basis for temperature (10.9 ± 0.4 °C) and dissolved oxygen (8.8 ± 0.3 mg L<sup>-1</sup>) using a  
97 portable probe (Hach Lange GmbH, Berlin, Germany) and pH (7.3 ± 0.2) using a pH/redox probe (Oxyguard A/S,  
98 Farum, Denmark). At the experimental start, fish were sedated with tricaine methanesulphonate (MS-222; 50 mg  
99 L<sup>-1</sup>) buffered with sodium bicarbonate and weighed. The study was performed in compliance with laws and  
100 regulations on the use of animals for research purposes in Sweden, which is overseen by the Swedish Board of  
101 Agriculture.

102

### 103 *2.2 Diets and feeding*

104

105 Fish were fed either a fishmeal-based reference diet or one of three test diets where the reference diet was mixed  
106 in a ratio of 70:30 with a test ingredient of either pre-pupae, larvae or defatted-larvae meal from black soldier fly,  
107 as according to Cho (1979). See Table 1 for the formulation of the reference diet. The larvae and pre-pupae meals  
108 were produced by the Environmental Engineering Unit, Department of Energy and Technology, SLU (Uppsala,  
109 Sweden) as according to Lalander, et al. (2015), except the rearing substrate was based on food compost from a  
110 local restaurant. The defatted-larvae meal was produced by a commercial company (Protix, Dongen, The  
111 Netherlands) using a wheat bran substrate. The reference diet was first produced by adding the non-test  
112 ingredients, listed in Table 1, in a rotating drum mixer and then, separately, 70:30 of the reference diet was mixed  
113 with each test ingredient. Gelatin and hot water were added to each diet as a binder, mixed in a kitchen mixer and  
114 pressed through a meat grinder that had a 3.5 mm die (Nima Maskinteknik AB, Örebro, Sweden). Diet strings  
115 were air-dried at 55 °C for 24 hr, cut into pellets with a kitchen blender (Kneubühler, Luzern, Germany) and stored  
116 at -20 °C until the start of the experiment.

117

118 For proximate composition of diets (Table 1), dry matter was analysed after treatment at 103 °C for 16 h and ash  
119 was determined after treatment at 550 °C for 3 h followed by cooling and weighing (AOAC, 1995). Total nitrogen  
120 (N) was determined using a 2020 Digestor and 2400 Kjeltac Analyser (FOSS Analytical A/S, Hilleröd, Denmark)

121 and crude protein (CP) was calculated as  $N \times 6.25$  (Nordic Committee on Food Analysis, 1976). Crude lipid was  
122 determined using a Soxtec System HT 1043 Extraction Unit (FOSS Analytical A/S, Hillerød, Denmark) according  
123 to the manufacturer (ANKOM Technology, Macedon, NY, USA). Neutral detergent fibre (NDF) was determined  
124 according to the Amylase Neutral Detergent method (Mertens, 2002). Acid detergent fibre (ADF) was determined  
125 after 1 h boiling in a solution of 0.5 M sulphuric acid and 2% cetyl trimethylammonium bromide according to  
126 Method 973.18 of AOAC (AOAC, 1995). Chitin was estimated based on the level of ADF solely derived from  
127 the 30% inclusion of the insect meals. Chitin was estimated by subtracting the ADF in 70% of the fishmeal  
128 reference diet (i.e. 32.4 g/kg; assumed to be cellulose) from the total ADF in the insect-based diets (Finke, 2007).

129

130 Over the period of five weeks, fish were fed daily at a rate of 1% body weight (BW) per day via automatic belt  
131 feeders (Hølland teknologi, Sandnes, Norway) from 10:00 to 12:00. The four diets were randomly assigned to  
132 each of the 16 tanks. Feed waste was collected continuously using a belt collector (Hølland teknologi, Sandnes,  
133 Norway), weighed twice per day and then pooled for subsequent dry matter analysis. Feed waste was subtracted  
134 from the total feed intake using the recovery method according to Helland, et al. (1996).

135

### 136 *2.3 Sampling of the distal intestine*

137

138 Fish were fed until terminal sampling on the final day of the study (i.e. within 20-24 hours of final feeding). Three  
139 fish from each tank (n=12) were euthanised with an overdose of 200 mg L<sup>-1</sup> MS-222 buffered with sodium  
140 bicarbonate and their cervical vertebrae were severed. Under sterile conditions, the midline of each fish was  
141 dissected near a flame within a fume hood and the distal intestine (hindgut) was cut and removed between the  
142 ileorectal valve and 0.5 cm before the anal opening. The intestine was cut longitudinally and a scalpel was used  
143 to scrape and collect 200-400 mg of luminal content and mucosa (combined) into a sterile Eppendorf tube  
144 containing 1 mL of RNAlater® (Sigma-Aldrich Co, St. Louis, MO, USA). Samples were kept on ice for less than  
145 six hours and then stored at -80 °C until later analysis. Both luminal content and mucosa were collected and  
146 analysed together in order to show a comprehensive representation of both allochthonous (transient) and  
147 autochthonous (adhered) bacteria in the distal intestine.

148

### 149 *2.4 Preparation for 16S rRNA gene sequencing*

150

151 DNA was isolated from intestinal samples and 16S rRNA gene amplicons were generated using a two-step PCR  
152 with meta-barcoding. The amplicons were purified with magnetic beads, pooled into a single library and  
153 sequenced using an Illumina MiSeq platform, according to Herlemann, et al. (2011) and Hugerth, et al. (2014)  
154 with modification by Huyben, et al. (2017). In brief, approximately 200 mg of intestinal content/mucosa in  
155 RNeasy lysis solution were transferred to sterile tubes containing 0.5 g of 0.1 mm silica beads and homogenised in  
156 a Precellys homogeniser (Bertin Instruments, Montigny-le-Bretonneux, France) for two cycles of 60 sec at 6000  
157 rpm followed by 5 min rest on ice. The DNA was extracted using a QIAamp Fast DNA Stool Mini Kit (Qiagen  
158 GmbH, Hilden, Germany) according to the manufacturer's instructions. Amplicons were prepared by adding 2 µL  
159 of template DNA to sterile tubes containing 1 µL of each primer (10 µM), 8.5 µL nuclease-free water and 12.5  
160 µL of 2x concentrated Phusion® High-Fidelity Master Mix (Thermo Fisher Scientific Inc., Waltham, MA, USA).  
161 The V4 region of the 16S ribosomal RNA gene was amplified using the primers 515F (5'-  
162 GTGCCAGCMGCCGCGGTAA-3') and 805R (5'-GACTACHVGGGTATCTAATCC-3') (Hugerth, et al.,  
163 2014). Conditions for PCR included denaturation at 98 °C for 30 sec, followed by 35 cycles of 98 °C for 10 sec,  
164 60 °C for 30 sec and 72 °C for 10 sec, ending with 72 °C for 2 min. Amplicons were visualised by gel  
165 electrophoresis and purified using Agencourt AMPure XP magnetic beads according to the manufacturer's  
166 instructions (Beckman Coulter Inc., Bromma, Sweden). The 515F and 805R primers containing Illumina-  
167 compatible barcodes (eight nucleotide combinations) with adapters were used to tag each sample individually  
168 during the second PCR step. Amplicons of 10.5 µL were added to sterile tubes containing 1 µL of each barcode  
169 primer (10µM) and 12.5 µL of 2x concentrated Phusion® High-Fidelity Master Mix (Thermo Fisher Scientific  
170 Inc). Conditions for the second PCR step included denaturation at 98 °C for 30 sec, followed by 10 cycles of  
171 denaturation at 98 °C for 10 sec, hybridisation at 62 °C for 30 sec and elongation at 72 °C for 5 sec, followed by  
172 final elongation at 72 °C for 2 min. The amplicons were purified as before, quantified using a Qubit® 3.0  
173 Fluorometer (Invitrogen, Thermo Fisher Scientific), diluted with elution buffer to 10 nM and then all samples  
174 were pooled. The pooled library was quality checked (size and abundance) using qPCR and sequenced using the  
175 Illumina MiSeq platform at SciLifeLab AB (Stockholm, Sweden).

176

### 177 *2.5 Bioinformatic analysis of sequence data*

178

179 The bacterial sequence data were processed according to Müller, et al. (2016). In brief, the paired end sequence  
180 reads were quality trimmed using the Cutadapt tool (Martin, 2011) in Python version 2.7 (Python Software

181 Foundation, <http://www.python.org>) to remove remaining adaptor and primer sequences, bases with quality below  
182 10 from the 3' end, reads containing N bases, reads longer than 300 base pairs and reads not containing primer  
183 sequences. Paired end reads were joined using the `join_paired_ends.py` function according to the SeqPrep method  
184 (<https://github.com/jstjohn/SeqPrep>) in Quantitative Insights into Microbial Ecology (QIIME) version 1.8.0  
185 (Caporaso, et al., 2010b). The joined reads were then used for split libraries and the operational taxonomic units  
186 (OTUs) were assigned using the open reference OTU picking strategy at a threshold of 97%, using U-CLUST  
187 against Greengenes core set (gg\_13\_8) (Edgar, 2010; Rideout, et al., 2014). The representative sequences were  
188 aligned against the Greengenes core set using PyNAST software (Caporaso, et al., 2010a). The chimeric sequences  
189 were removed by ChimeraSlayer (Haas, et al., 2011). Taxonomy was assigned to each OTU using the Ribosomal  
190 Database Project (RDP) classifier with a minimum confidence threshold of 80% (Wang, et al., 2007). The  
191 alignment was filtered to remove gaps and hypervariable regions using a Lane mask and a maximum-likelihood  
192 tree was constructed from the filtered alignment using FastTree (Price, et al., 2010). The final OTU table was  
193 further filtered to include OTUs present in at least three samples and to exclude OTUs identified as chloroplasts  
194 and mitochondria, since only bacteria were of interest. In addition, the number of reads per sample was normalised  
195 (termed subsampled) to equal that in the sample with the lowest number of reads (i.e. 10,238). The 16S rRNA  
196 gene sequences were deposited in the NCBI Sequence Read Archive (SRA) as SRA Accession SRP144010 and  
197 BioProject PRJNA454155 (<https://www.ncbi.nlm.nih.gov/bioproject/PRJNA454155>).

198

## 199 *2.6 Statistical analyses*

200

201 All data were analysed using R<sup>®</sup> version 3.3.1 (R-Core-Team, 2015) with the 'vegan' (Oksanen, et al., 2018) and  
202 'nlme' (Pinheiro, et al., 2014) statistical packages. For  $\alpha$ -diversity of bacterial OTUs in the gut, No. of OTUs/taxa,  
203 Shannon diversity and Chao-1 richness indices were generated from non-transformed count data using `rowSums`,  
204 `diversity` and `estimateR` functions. Significant differences between diets were determined by applying a Linear  
205 Mixed Effects (LME) model with diet as a fixed effect and tank as a random effect followed by Least Square  
206 Means test (`lsmeans` package) with Tukey adjustment to account for multiple pair-wise comparisons (Lenth,  
207 2016). A value of  $p < 0.05$  was considered significant.

208

209 For  $\beta$ -diversity, plots of bacterial OTUs were produced based on Non-Metric Multidimensional Scaling (NMDS)  
210 with Bray-Curtis index after 2D Wisconsin standardization of square-root transformed data (`metaMDS` function).

211 Similarity Percentage Analysis (SIMPER) followed by one way Permutational Multivariate Analysis of Variance  
212 (PERMANOVA; adonis function) using Bray-Curtis index at 999 permutations (McArdle, Anderson, 2001;  
213 Oksanen, et al., 2018) with diet and tank as factors. Bonferroni adjusted p-values were generated to determine  
214 significant differences between diets in terms of composition of gut bacteria. In addition, the LME model and  
215 lsmeans test used above were applied to bacterial OTUs at the genus, order and phylum levels that had a mean  
216 relative abundance >1% in order to determine effects of each diet on the most prevalent bacterial groups.

217

### 218 **3. Results**

219

220 Illumina Miseq sequencing of the v4 region of the 16S rRNA gene from the gut content/mucosa of rainbow trout  
221 fed the fishmeal and insect diets produced a normalised count of 10,238 sequence reads per fish (491,424 in total)  
222 that identified to 878 individual OTUs belonging to 109 known taxa (grouped by genus) after data quality filtering.  
223 Before filtering and subsampling, the number of sequence reads was  $76,875 \pm 3,612$  (mean  $\pm$  SE) per sample for  
224 a total of 3.7 million sequences. Analysis of OTUs showed that alpha-diversity of gut bacteria increased for fish  
225 fed all three insect-based diets compared with the fishmeal diet (Table 2). Fish fed the pre-pupae diet showed the  
226 highest diversity for all three indices and was significantly higher than fish fed larvae and defatted-larvae diets  
227 for the Shannon and Chao-1 indices (Fig. 1). Compared with fishmeal, fish fed the larvae diet had increased  
228 Shannon diversity and fish fed the defatted-larvae diet had higher Chao-1 richness.

229

230 Diet had an overall effect on the beta-diversity and composition of bacterial OTUs in the gut (PERMANOVA;  
231  $F=24.132$ ,  $R^2=0.633$ ,  $p=0.001$ ), although there was no significant effect of tank (PERMANOVA;  $F=1.300$ ,  
232  $R^2=0.126$ ,  $p=0.161$ ). Composition of gut bacteria was significantly different between fish fed each diet ( $p<0.01$ ),  
233 while least dissimilar between fish fed the larvae and defatted-larvae diets (SIMPER; 71.4%). Compared with  
234 fishmeal diet, fish fed the defatted-larvae diet were the most dissimilar followed by fish fed the pre-pupae and  
235 larvae diets (SIMPER; 90.3, 87.7 and 82.6%). The NMDS plot (Fig. 2) agreed with the SIMPER analysis as the  
236 cluster of fish fed the fishmeal diet were separated from fish fed the insect-based diets, while furthest from the  
237 pre-pupae diet.

238

239 Relative abundances of bacterial OTUs found in the fish gut were mainly represented by the phyla Firmicutes,  
240 Proteobacteria and Actinobacteria (Fig. 3). Compared to fishmeal diet, Firmicutes significantly increased in fish



241 fed the larvae and defatted-larvae diets (LME, N=12;  $p=0.002$  and  $<0.001$ , respectively), Actinobacteria increased  
242 in fish fed the pre-pupae and larvae diets ( $p<0.001$  and  $0.009$ , respectively) and Proteobacteria decreased for all  
243 the insect-based diets ( $p=0.002$ ,  $0.003$  and  $0.001$ , respectively). On the order level, most OTUs were represented  
244 by Bacillales, Pseudomonadales, Actinomycetales and Lactobacillales (Fig. 4). Compared to fishmeal diet,  
245 Bacillales significantly increased in fish fed the larvae and defatted-larvae diets ( $p=0.012$  and  $<0.001$ ,  
246 respectively), Pseudomonadales decreased for all the insect-based diets ( $p=0.005$ ,  $0.008$  and  $0.003$ , respectively),  
247 Actinomycetales increased for the pre-pupae and larvae diets ( $p<0.001$  and  $p=0.009$ , respectively) and  
248 Lactobacillales increased for the pre-pupae and larvae diets ( $p=0.043$  and  $p<0.001$ , respectively). On the genus  
249 level, OTUs with  $>1\%$  relative abundance (by decreasing abundance) included *Corynebacterium*, *Pseudomonas*,  
250 *Photobacterium*, *Achromobacter*, *Virgibacillus*, *Facklamia*, *Flavobacterium*, *Lactobacillus*, *Brevibacterium* and  
251 Lactobacillaceae;Other (unclassified). There was a significant effect of diet ( $p<0.05$ ) on the OTUs with  $>1\%$   
252 abundance, except for *Flavobacterium* and *Achromobacter* ( $p=0.080$  and  $0.311$ , respectively). For significant  
253 differences between diets, see Fig. 5.

254

255 Fish fed the fishmeal, pre-pupae, larvae and defatted-larvae diets had a mean individual weight gain of 74.0, 74.1,  
256 81.8 and 66.1 g (SE = 8.1 g), respectively, and a mean individual feed intake of 81.5, 88.2, 89.1 and 77.2 g (SE  
257 = 2.4 g), respectively. No mortalities were recorded during the experiment.

258

## 259 4. Discussion

260

### 261 4.1 Dietary chitin and chitinase producing bacteria

262

263 This study is the first to analyse the effects of feeding black soldier fly meals on the gut microbiota of rainbow  
264 trout using high-throughput sequencing (i.e. Illumina next-generation sequencing). This method highlighted the  
265 dramatic shift from high Proteobacteria:Firmicutes ratio in the gut of fish fed fishmeal to a low ratio with increased  
266 bacterial diversity in fish fed the insect-based diets (Fig. 3, Table 2). Chitin may have acted as a new substrate to  
267 increase the proliferation of chitinolytic bacteria, which are mainly represented by the Firmicutes phyla and  
268 include many *Bacillus* species (Cody, 1989). Using Sanger sequencing of agar cultured isolates, *Bacillus* spp.  
269 were found in the intestine of Atlantic salmon fed a diet with 5% chitin and this group of bacteria showed the  
270 highest chitinase activity *in vitro* (Askarian, et al., 2012). Similarly, we found significant increases in Bacillaceae

271 (the family including *Bacillus*) in our study in fish fed diets with black soldier fly larvae as well as defatted-larvae  
272 diets. In addition, previous studies have found that feeding with black soldier fly larvae or krill-derived chitin can  
273 significantly change the gut microbiota in rainbow trout (Bruni, et al., 2018) and Atlantic cod (Zhou, et al., 2013).  
274 Lastly, supplementation of chitinase enzymes derived from bacteria in chitin-based diets has been shown to  
275 increase growth performance of hybrid tilapia (Zhang, et al., 2014). The higher dietary chitin in the insect-based  
276 diets may explain the significant change in gut microbiota of fish.

277

#### 278 *4.2 Increased bacterial diversity and abundance of lactic acid bacteria*

279

280 High bacterial diversity is considered to have a positive effect on gut health since species-rich communities are  
281 thought to out-compete pathogens for nutrients and colonization, consequently resisting pathogen invasion and  
282 intestinal infection (Cerezuela, et al., 2013; Levine, D'Antonio, 1999; Yachi, Loreau, 1999). Therefore, fish fed  
283 all three insect diets, especially pre-pupae, in our study may have a healthier gut microbiota since their bacterial  
284 alpha-diversity was higher compared with the fishmeal diet (Table 2). One possible reason for the highest diversity  
285 in fish fed the pre-pupae diet may be a higher content of dietary chitin (Table 1). Previous studies have suggested  
286 that more chitin is deposited in the exoskeleton of insects at later life-cycle stages (Xiao, et al., 2018). However,  
287 other studies have found similar levels of chitin between life stages, although amino acid composition had changed  
288 (Finke, 2007). Chitin is not a typical component in commercial aquafeeds, thus its inclusion may stimulate the  
289 colonisation and growth of less common bacteria in the intestine that have the ability to digest chitin as a source  
290 of nutrients. In Atlantic salmon, feeding chitin was found to increase lactic acid bacteria (i.e. order of  
291 Lactobacillaceae) in the gut as well (Askarian, et al., 2012). Studies have suggested that chitin may be a  
292 preferential substrate for lactic acid bacteria in the gut of salmonids (Bruni, et al., 2018), which explains the  
293 increased abundance when fish were fed the insect-based diets in the present study (Fig. 4). Increased abundance  
294 of lactic acid bacteria has been used as an indicator of a healthy gut since they produce bacteriocins that inhibit  
295 pathogens (Dimitroglou, et al., 2011; Merrifield, et al., 2010; Ringø, Gatesoupe, 1998). In addition, several studies  
296 have found a decreased abundance of lactic acid bacteria associated with reduced growth or temperature stress in  
297 salmonids (Hovda, et al., 2012; Huyben, et al., 2018; Huyben, et al., 2017; Neuman, et al., 2016). However, a  
298 recent study found that abundance of lactic acid bacteria increased in Atlantic salmon with soybean meal-induced  
299 enteritis (Gajardo, et al., 2017), which challenges this bacterial order as a positive indicator of gut health. The  
300 increased bacterial diversity and abundance of lactic acid bacteria indicate that feeding black soldier fly meals

301 may improve gut health of rainbow trout, although further studies are needed to correlate changes in intestinal  
302 bacteria with empirical health indicators, e.g. morphology and gene expression.

303

#### 304 4.3 Effect of dietary lipids and insect rearing conditions on fish gut bacteria

305

306 The crude lipid content of the insect meals may have altered the gut microbiota in the fish since the full-fat larvae  
307 and pre-pupae diets had 71 and 40 g kg<sup>-1</sup> higher levels than the defatted-larvae diet (Table 1). Insect meal can be  
308 defatted in order to reduce the lipid content to maintain feed pellet stability and avoid altering the lipid composition  
309 of the fish fillet (Henry, et al., 2015; Sealey, et al., 2011). In our study, OTUs of *Corynebacterium* (including *C.*  
310 *variabile*) were significantly higher in fish fed the full-fat larvae and pre-pupae (Fig. 5) and this bacterium has  
311 been reported to produce high levels of lipase (Brennan, et al., 2002). The *C. variabile* has been found in the gut  
312 of insects, such as the common fruit fly (*Drosophila melanogaster*) (Storelli, et al., 2011) and predatory mites  
313 (*Neoseiulus cucumeris*) (Pekas, et al., 2017), which suggests this bacterium in our study may have originated from  
314 the insect meal. This bacterium may also be derived from the insect rearing facility or substrate. The *C. variabile*  
315 can tolerate pH values below 4.9 (Brennan, et al., 2002), which may have allowed it to bypass acidic conditions  
316 in the fish stomach and colonise the intestine. Fish fed the defatted-larvae meal had very low abundance of  
317 *Corynebacterium* (i.e. <1%; Fig. 5), which corresponds to the low lipid content in the diet. These results indicate  
318 the lipid composition in the diet and/or bacteria present in the insect meals may have influenced the gut microbiota  
319 in these fish, although these aspects need further investigation.

320

321

322 The rearing conditions and microbiota of the insects fed to fish may have influenced the gut microbiota of the fish  
323 in our study, especially since the diets were produced via cold-pelleting (opposed to extrusion) that avoids  
324 extensive heat inactivation of microbes (Huyben, et al., 2017). In a study that used 454 pyro-sequencing, the  
325 microbiota of mealworms and grasshoppers were dominated by the Firmicutes phyla, especially lactic acid  
326 bacteria (Stoops, et al., 2016), which is similar to the gut bacteria found in our study (Fig. 3 and 4). The farmed  
327 mealworm larvae also had a high abundance of Actinobacteria, which was significantly increased in fish fed black  
328 soldier fly larvae and pre-pupae in our study, respectively (Fig. 3). Aside from the effects of dietary lipids,  
329 differences in gut bacterial composition of fish fed the full-fat and defatted insects may be due to different insect  
330 rearing conditions (i.e. substrate of food compost versus wheat bran). Previous studies have found that different

331 substrates, such as those enriched with offal trimmings, used to rear black soldier flies can impact growth  
332 performance of rainbow trout and Atlantic salmon (Lock, et al., 2016; Sealey, et al., 2011). This may be the case  
333 in our study where restaurant compost was used as a substrate to produce black soldier flies included in the larvae  
334 and pre-pupae diets compared with a vegetable substrate for the defatted-larvae diet.

335

## 336 **5. Conclusions**

337

338 This study showed the effects of feeding black soldier flies in different life-cycle stages and lipid content on the  
339 intestinal microbiota of rainbow trout using Illumina high-throughput sequencing for the first time. The  
340 composition of gut bacteria was different for each diet and the pre-pupae diet was the most dissimilar compared  
341 with the fishmeal diet. Feeding insects resulted in elevated bacterial diversity and abundance of lactic acid  
342 bacteria, which is a potential indicator of improved gut health. Fish fed the insect-based diets had increased  
343 abundance of Firmicutes and Actinobacteria with a reduction in Proteobacteria. Fish fed larvae and pre-pupae  
344 diets had increased abundance of *Corynebacterium*, which was attributed to its ability to produce lipase and the  
345 high content of dietary lipids. For both larvae diets, abundance of Bacillaceae was significantly increased and this  
346 was attributed to their ability to produce chitinase and the high level of dietary chitin. These results indicate that  
347 feeding black soldier fly alters the gut microbiota of rainbow trout and insects harvested at different life-cycle  
348 stages and/or defatted further influence the bacterial communities.

349

## 350 **Acknowledgements**

351

352 The authors acknowledge funding from the Swedish University of Agricultural Sciences, Vinnova (Challenge-  
353 driven innovation, Ref no: 2015-00405), and support from the National Genomics Infrastructure in Stockholm  
354 funded by Science for Life Laboratory, the Knut and Alice Wallenberg Foundation and the Swedish Research  
355 Council, and SNIC/Uppsala Multidisciplinary Center for Advanced Computational Science for assistance with  
356 massively parallel sequencing. Special thanks to Johan Dicksved and Lidija Arapovic for laboratory help, Li Sun  
357 for processing the sequence data, Björn Vinnerås and Cecilia Lalander for producing the larvae and pre-pupae  
358 meals and Protix for supplying the defatted-larvae meal.

359

## 360 **References**

- 362 AOAC, 1995. Official Methods of Analysis of AOAC International, 16th ed. Association of Official Analytical  
363 Chemists, Washington, DC.
- 364 Askarian, F., Zhou, Z., Olsen, R.E., Sperstad, S., Ringø, E., 2012. Culturable autochthonous gut bacteria in  
365 Atlantic salmon (*Salmo salar* L.) fed diets with or without chitin. Characterization by 16S rRNA gene  
366 sequencing, ability to produce enzymes and in vitro growth inhibition of four fish pathogens.  
367 Aquaculture. 326, 1-8.
- 368 Belghit, I., Liland, N.S., Waagbø, R., Biancarosa, I., Pelusio, N., Li, Y., Krogdahl, Å., Lock, E.J., 2018.  
369 Potential of insect-based diets for Atlantic salmon (*Salmo salar*). Aquaculture. 491, 72-81.
- 370 Brennan, N.M., Ward, A.C., Beresford, T.P., Fox, P.F., Goodfellow, M., Cogan, T.M., 2002. Biodiversity of the  
371 bacterial flora on the surface of a smear cheese. Appl. Environ. Microbiol. 68, 820-830.
- 372 Bruni, L., Pastorelli, R., Viti, C., Gasco, L., Parisi, G., 2018. Characterisation of the intestinal microbial  
373 communities of rainbow trout (*Oncorhynchus mykiss*) fed with *Hermetia illucens* (black soldier fly)  
374 partially defatted larva meal as partial dietary protein source. Aquaculture. 487, 56-63.
- 375 Caporaso, J.G., Bittinger, K., Bushman, F.D., DeSantis, T.Z., Andersen, G.L., Knight, R., 2010a. PyNAST: a  
376 flexible tool for aligning sequences to a template alignment. Bioinformatics. 26, 266-267.
- 377 Caporaso, J.G., Kuczynski, J., Stombaugh, J., Bittinger, K., Bushman, F.D., Costello, E.K., Fierer, N., Pena,  
378 A.G., Goodrich, J.K., Gordon, J.I., 2010b. QIIME allows analysis of high-throughput community  
379 sequencing data. Nat. Methods. 7, 335-336.
- 380 Cerezuela, R., Fumanal, M., Tapia-Paniagua, S.T., Meseguer, J., Moríñigo, M.Á., Esteban, M.Á., 2013.  
381 Changes in intestinal morphology and microbiota caused by dietary administration of inulin and  
382 *Bacillus subtilis* in gilthead sea bream (*Sparus aurata* L.) specimens. Fish Shellfish Immunol. 34,  
383 1063-1070.
- 384 Cho, C., 1979. Apparent digestibility measurement in feedstuffs for rainbow trout. in: Halver, J., Tiews, K.  
385 (Eds.), Proceedings of the world symposium on finfish nutrition and fishfeed technology. Heenemann,  
386 Berlin, Germany, pp. 239-247.
- 387 Cody, R., 1989. Distribution of chitinase and chitobiase in *Bacillus*. Curr. Microbiol. 19, 201-205.
- 388 Desai, A.R., Links, M.G., Collins, S.A., Mansfield, G.S., Drew, M.D., Van Kessel, A.G., Hill, J.E., 2012.  
389 Effects of plant-based diets on the distal gut microbiome of rainbow trout (*Oncorhynchus mykiss*).  
390 Aquaculture. 350, 134-142.
- 391 Dimitroglou, A., Merrifield, D.L., Carnevali, O., Picchiatti, S., Avella, M., Daniels, C., Güroy, D., Davies, S.J.,  
392 2011. Microbial manipulations to improve fish health and production—a Mediterranean perspective.  
393 Fish Shellfish Immunol. 30, 1-16.
- 394 Edgar, R.C., 2010. Search and clustering orders of magnitude faster than BLAST. Bioinformatics. 26, 2460-  
395 2461.
- 396 Finke, M.D., 2007. Estimate of chitin in raw whole insects. Zoo Biol. 26, 105-115.
- 397 Gajardo, K., Jaramillo-Torres, A., Kortner, T.M., Merrifield, D.L., Tinsley, J., Bakke, A.M., Krogdahl, Å.,  
398 2017. Alternative protein sources in the diet modulate microbiota and functionality in the distal  
399 intestine of Atlantic salmon (*Salmo salar*). Appl. Environ. Microbiol. 83, e02615.
- 400 Haas, B.J., Gevers, D., Earl, A.M., Feldgarden, M., Ward, D.V., Giannoukos, G., Ciulla, D., Tabbaa, D.,  
401 Highlander, S.K., Sodergren, E., Methe, B., DeSantis, T.Z., Human Microbiome, C., Petrosino, J.F.,  
402 Knight, R., Birren, B.W., 2011. Chimeric 16S rRNA sequence formation and detection in Sanger and  
403 454-pyrosequenced PCR amplicons. Genome Res. 21, 494-504.
- 404 Helland, S., Grisdale-Helland, B., Nerland, S., 1996. A simple method for the measurement of daily feed intake  
405 of groups of fish in tanks. Aquaculture. 139, 157-163.
- 406 Henry, M., Gasco, L., Piccolo, G., Fountoulaki, E., 2015. Review on the use of insects in the diet of farmed fish:  
407 Past and future. Anim. Feed Sci. Technol. 203, 1-22.
- 408 Herlemann, D.P., Labrenz, M., Jurgens, K., Bertilsson, S., Waniek, J.J., Andersson, A.F., 2011. Transitions in  
409 bacterial communities along the 2000 km salinity gradient of the Baltic Sea. ISME Journal. 5, 1571-  
410 1579.
- 411 Hovda, M.B., Fontanillas, R., McGurk, C., Obach, A., Rosnes, J.T., 2012. Seasonal variations in the intestinal  
412 microbiota of farmed Atlantic salmon (*Salmo salar* L.). Aquacult. Res. 43, 154-159.
- 413 Hugerth, L.W., Wefer, H.A., Lundin, S., Jakobsson, H.E., Lindberg, M., Rodin, S., Engstrand, L., Andersson,  
414 A.F., 2014. DegePrime, a program for degenerate primer design for broad-taxonomic-range PCR in  
415 microbial ecology studies. Appl. Environ. Microbiol. 80, 5116-5123.
- 416 Huyben, D., Sun, L., Moccia, R., Kiessling, A., Dicksved, J., Lundh, T., 2018. Dietary live yeast and increased  
417 water temperature influence the gut microbiota of rainbow trout. J Appl Microbiol. 124, 1377-1392.

- 418 Huyben, D., Nyman, A., Vidaković, A., Passoth, V., Moccia, R., Kiessling, A., Dicksved, J., Lundh, T., 2017.  
419 Effects of dietary inclusion of the yeasts *Saccharomyces cerevisiae* and *Wickerhamomyces anomalus*  
420 on gut microbiota of rainbow trout. *Aquaculture*. 473, 528-537.
- 421 Ingerslev, H.C., von Gersdorff Jørgensen, L., Lenz Strube, M., Larsen, N., Dalsgaard, I., Boye, M., Madsen, L.,  
422 2014. The development of the gut microbiota in rainbow trout (*Oncorhynchus mykiss*) is affected by  
423 first feeding and diet type. *Aquaculture*. 424-425, 24-34.
- 424 Kroeckel, S., Harjes, A.G.E., Roth, I., Katz, H., Wuertz, S., Susenbeth, A., Schulz, C., 2012. When a turbot  
425 catches a fly: Evaluation of a pre-pupae meal of the Black Soldier Fly (*Hermetia illucens*) as fish meal  
426 substitute — Growth performance and chitin degradation in juvenile turbot (*Psetta maxima*).  
427 *Aquaculture*. 364-365, 345-352.
- 428 Lalander, C.H., Fidjeland, J., Diener, S., Eriksson, S., Vinnerås, B., 2015. High waste-to-biomass conversion  
429 and efficient *Salmonella* spp. reduction using black soldier fly for waste recycling. *Agronomy for*  
430 *Sustainable Development*. 35, 261-271.
- 431 Lenth, R., 2016. Least-squares means: the R package lsmeans. *J Stat Softw*. 69, 1-33.
- 432 Levine, J.M., D'Antonio, C.M., 1999. Elton revisited: a review of evidence linking diversity and invasibility.  
433 *Oikos*. 87, 15-26.
- 434 Llewellyn, M.S., Boutin, S., Hoseinifar, S.H., Derome, N., 2014. Teleost microbiomes: the state of the art in  
435 their characterization, manipulation and importance in aquaculture and fisheries. *Front Microbiol*. 5,  
436 207.
- 437 Lock, E., Arsiwalla, T., Waagbø, R., 2016. Insect larvae meal as an alternative source of nutrients in the diet of  
438 Atlantic salmon (*Salmo salar*) postsmolt. *Aquacult. Nutr*. 22, 1202-1213.
- 439 Lyons, P.P., Turnbull, J.F., Dawson, K.A., Crumlish, M., 2017. Effects of low-level dietary microalgae  
440 supplementation on the distal intestinal microbiome of farmed rainbow trout *Oncorhynchus mykiss*  
441 (Walbaum). *Aquacult. Res*. 48, 2438-2452.
- 442 Magalhães, R., Sánchez-López, A., Leal, R.S., Martínez-Llorens, S., Oliva-Teles, A., Peres, H., 2017. Black  
443 soldier fly (*Hermetia illucens*) pre-pupae meal as a fish meal replacement in diets for European seabass  
444 (*Dicentrarchus labrax*). *Aquaculture*. 476, 79-85.
- 445 Martin, M., 2011. Cutadapt removes adapter sequences from high-throughput sequencing reads. *EMBnet J*. 17,  
446 10-12.
- 447 McArdle, B.H., Anderson, M.J., 2001. Fitting multivariate models to community data: a comment on distance  
448 based redundancy analysis. *Ecology*. 82, 290-297.
- 449 Merrifield, D.L., Dimitroglou, A., Foey, A., Davies, S.J., Baker, R.T.M., Bøggwald, J., Castex, M., Ringø, E.,  
450 2010. The current status and future focus of probiotic and prebiotic applications for salmonids.  
451 *Aquaculture*. 302, 1-18.
- 452 Mertens, D.R., 2002. Gravimetric determination of amylase-treated neutral detergent fiber in feeds with  
453 refluxing in beakers or crucibles: collaborative study. *J AOAC Int*. 85, 1217-1240.
- 454 Michl, S.C., Ratten, J.-M., Beyer, M., Hasler, M., LaRoche, J., Schulz, C., 2017. The malleable gut microbiome  
455 of juvenile rainbow trout (*Oncorhynchus mykiss*): Diet-dependent shifts of bacterial community  
456 structures. *PLoS one*. 12, e0177735.
- 457 Muin, H., Taufek, N.M., Kamarudin, M.S., Razak, S.A., 2017. Growth performance, feed Utilization and body  
458 composition of Nile tilapia, *Oreochromis niloticus* (Linnaeus, 1758) fed with different levels of black  
459 soldier fly, *Hermetia illucens* (Linnaeus, 1758) maggot meal diet. *Iran. J. Fish. Sci*. 16, 567-577.
- 460 Müller, B., Sun, L., Westerholm, M., Schnürer, A., 2016. Bacterial community composition and fhs profiles of  
461 low-and high-ammonia biogas digesters reveal novel syntrophic acetate-oxidising bacteria. *Biotechnol.*  
462 *Biofuels*. 9, 1-18.
- 463 Neuman, C., Hatje, E., Zarkasi, K.Z., Smullen, R., Bowman, J.P., Katouli, M., 2016. The effect of diet and  
464 environmental temperature on the faecal microbiota of farmed Tasmanian Atlantic Salmon (*Salmo*  
465 *salar* L.). *Aquacult. Res*. 47, 660-672.
- 466 Nordic Committee on Food Analysis, 1976. Determination in feeds and faeces according to Kjeldahl, No6.  
467 NKML, Oslo, Norway.
- 468 Nyman, A., Huyben, D., Lundh, T., Dicksved, J., 2017. Effects of microbe-and mussel-based diets on the gut  
469 microbiota in Arctic charr (*Salvelinus alpinus*). *Aquaculture Reports*. 5, 34-40.
- 470 Oksanen, J., Blanchet, F., Friendly, M., Kindt, R., Legendre, P., McGlinn, D., Minchin, P., O'Hara, R., Simpson,  
471 G., Solymos, P., Henry, M., Stevens, H., Szöcs, E., Wagner, H., 2018. Vegan: community ecology  
472 package. R package version 2.5-1. <https://CRAN.R-project.org/package=vegan>.
- 473 Pekas, A., Palevsky, E., Sumner, J.C., Perotti, M.A., Nesvorna, M., Hubert, J., 2017. Comparison of bacterial  
474 microbiota of the predatory mite *Neoseiulus cucumeris* (Acari: Phytoseiidae) and its factitious prey  
475 *Tyrophagus putrescentiae* (Acari: Acaridae). *Scientific Reports*. 7, 2.
- 476 Pinheiro, J., Bates, D., DebRoy, S., Sarkar, D., 2014. R Core Team (2014) nlme: linear and nonlinear mixed  
477 effects models. R package version 3.1-117. <http://CRAN.R-project.org/package=nlme>.

478 Price, M.N., Dehal, P.S., Arkin, A.P., 2010. FastTree 2—approximately maximum-likelihood trees for large  
479 alignments. *PloS One*. 5, e9490.

480 R-Core-Team, 2015. R: A language and environment for statistical computing. R Foundation for Statistical  
481 Computing, Vienna, Austria.

482 Renna, M., Schiavone, A., Gai, F., Dabbou, S., Lussiana, C., Malfatto, V., Prearo, M., Capucchio, M.T.,  
483 Biasato, I., Biasibetti, E., De Marco, M., Brugiapaglia, A., Zoccarato, I., Gasco, L., 2017. Evaluation of  
484 the suitability of a partially defatted black soldier fly (*Hermetia illucens* L.) larvae meal as ingredient  
485 for rainbow trout (*Oncorhynchus mykiss* Walbaum) diets. *J Anim Sci Biotechnol*. 8, 57.

486 Rideout, J.R., He, Y., Navas-Molina, J.A., Walters, W.A., Ursell, L.K., Gibbons, S.M., Chase, J., McDonald,  
487 D., Gonzalez, A., Robbins-Pianka, A., 2014. Subsampled open-reference clustering creates consistent,  
488 comprehensive OTU definitions and scales to billions of sequences. *PeerJ*. 2, e545.

489 Ringø, E., Gatesoupe, F.-J., 1998. Lactic acid bacteria in fish: a review. *Aquaculture*. 160, 177-203.

490 Ringø, E., Zhou, Z., Olsen, R.E., Song, S.K., 2012. Use of chitin and krill in aquaculture - the effect on gut  
491 microbiota and the immune system: a review. *Aquacult. Nutr*. 18, 117-131.

492 Sealey, W.M., Gaylord, T.G., Barrows, F.T., Tomberlin, J.K., McGuire, M.A., Ross, C., St-Hilaire, S., 2011.  
493 Sensory analysis of rainbow trout, *Oncorhynchus mykiss*, fed enriched black soldier fly prepupae,  
494 *Hermetia illucens*. *J. World Aquacult. Soc.* 42, 34-45.

495 St-Hilaire, S., Sheppard, C., Tomberlin, J.K., Irving, S., Newton, L., McGuire, M.A., Mosley, E.E., Hardy,  
496 R.W., Sealey, W., 2007. Fly prepupae as a feedstuff for rainbow trout, *Oncorhynchus mykiss*. *J. World*  
497 *Aquacult. Soc.* 38, 59-67.

498 Stoops, J., Crauwels, S., Waud, M., Claes, J., Lievens, B., Van Campenhout, L., 2016. Microbial community  
499 assessment of mealworm larvae (*Tenebrio molitor*) and grasshoppers (*Locusta migratoria*  
500 *migratorioides*) sold for human consumption. *Food Microbiol*. 53, 122-127.

501 Storelli, G., Defaye, A., Erkosar, B., Hols, P., Royet, J., Leulier, F., 2011. *Lactobacillus plantarum* promotes  
502 drosophila systemic growth by modulating hormonal signals through TOR-dependent nutrient sensing.  
503 *Cell Metabolism*. 14, 403-414.

504 Tacon, A.G.J., Metian, M., 2008. Global overview on the use of fish meal and fish oil in industrially  
505 compounded aquafeeds: Trends and future prospects. *Aquaculture*. 285, 146-158.

506 Van Huis, A., Van Isterbeek, J., Klunder, H., Mertens, E., Halloran, A., Muir, G., Vantomme, P., 2013. Edible  
507 insects: future prospects for food and feed security. Food and agriculture organization of the United  
508 nations (FAO).

509 Wang, A.R., Ran, C., Ringø, E., Zhou, Z.G., 2018. Progress in fish gastrointestinal microbiota research. *Rev*  
510 *Aquacult*. 10, 626-640.

511 Wang, Q., Garrity, G.M., Tiedje, J.M., Cole, J.R., 2007. Naive Bayesian classifier for rapid assignment of rRNA  
512 sequences into the new bacterial taxonomy. *Appl. Environ. Microbiol*. 73, 5261-5267.

513 Whitley, S.N., Bollens, S.M., 2014. Fish assemblages across a vegetation gradient in a restoring tidal freshwater  
514 wetland: diets and potential for resource competition. *Environ. Biol. Fishes*. 97, 659-674.

515 Xiao, X., Jin, P., Zheng, L., Cai, M., Yu, Z., Yu, J., Zhang, J., 2018. Effects of black soldier fly (*Hermetia*  
516 *illucens*) larvae meal protein as a fishmeal replacement on the growth and immune index of yellow  
517 catfish (*Pelteobagrus fulvidraco*). *Aquacult. Res*. 49, 1569-1577.

518 Yachi, S., Loreau, M., 1999. Biodiversity and ecosystem productivity in a fluctuating environment: The  
519 insurance hypothesis. *Proc. Natl. Acad. Sci. U.S.A.* 96, 1463-1468.

520 Zhang, Y., Zhou, Z., Liu, Y., Cao, Y., He, S., Huo, F., Qin, C., Yao, B., Ringø, E., 2014. High-yield production  
521 of a chitinase from *Aeromonas veronii* B565 as a potential feed supplement for warm-water  
522 aquaculture. *Appl. Microbiol. Biotechnol*. 98, 1651-1662.

523 Zhou, Z., Karlsen, Ø., He, S., Olsen, R.E., Yao, B., Ringø, E., 2013. The effect of dietary chitin on the  
524 autochthonous gut bacteria of Atlantic cod (*Gadus morhua* L.). *Aquacult. Res*. 44, 1889-1900.

525

526 **Tables**

527

528 Table 1. Formulation (g kg<sup>-1</sup> wet matter basis) and proximate composition (g kg<sup>-1</sup> dry matter basis) of the  
 529 reference diet and experimental diets with 30% replacement with larvae, defatted-larvae and pre-pupae of black  
 530 soldier fly.

<i>Formulation</i>	Fishmeal	Larvae	Defat-Larvae	Pre-Pupae
Fish meal LT	500	350	350	350
Black soldier fly larvae meal <sup>1</sup>	0	300	0	0
Black soldier fly defatted-larvae meal <sup>2</sup>	0	0	300	0
Black soldier fly pre-pupae meal <sup>1</sup>	0	0	0	300
Wheat gluten	50	33	33	33
Wheat meal	80	53	53	53
Wheat starch	80	53	53	53
Fish oil	155	102	102	102
Gelatin	50	50	50	50
$\alpha$ -cellulose	50	33	33	33
Carboxymethyl cellulose	10	7	7	7
Vitamin & mineral premix	10	7	7	7
Monocalcium phosphate	10	7	7	7
Titanium dioxide	5	4	4	4
<i>Proximate composition</i>				
Dry matter	971	950	977	932
Crude protein	507	504	534	515
Crude lipid	191	252	181	221
Crude ash	111	109	100	123
Neutral detergent fibre	67	76	139	98
Acid detergent fibre	46	51	60	62
Chitin	0	19	28	30

531 <sup>1</sup>Larvae and pre-pupae meals produced by SLU (Uppsala, Sweden)

532 <sup>2</sup>Defatted larvae meal commercially produced by Protix (Dongen, The Netherlands)

533

534

535 Table 2. Diversity indices of bacterial OTUs in the distal intestine of rainbow trout fed diets based on fishmeal,  
 536 larvae, defatted-larvae and pre-pupae of black soldier fly.

	Fishmeal	Larvae	Defat-Larvae	Pre-Pupae	SE	p-value
No. of OTUs/taxa	98 <sup>a</sup>	203 <sup>ab</sup>	215 <sup>ab</sup>	326 <sup>b</sup>	31	0.002
Shannon diversity	1.58 <sup>a</sup>	2.74 <sup>b</sup>	2.16 <sup>ab</sup>	3.72 <sup>c</sup>	0.23	<0.001
Chao-1 richness	128 <sup>a</sup>	264 <sup>ab</sup>	301 <sup>b</sup>	437 <sup>c</sup>	38	<0.001

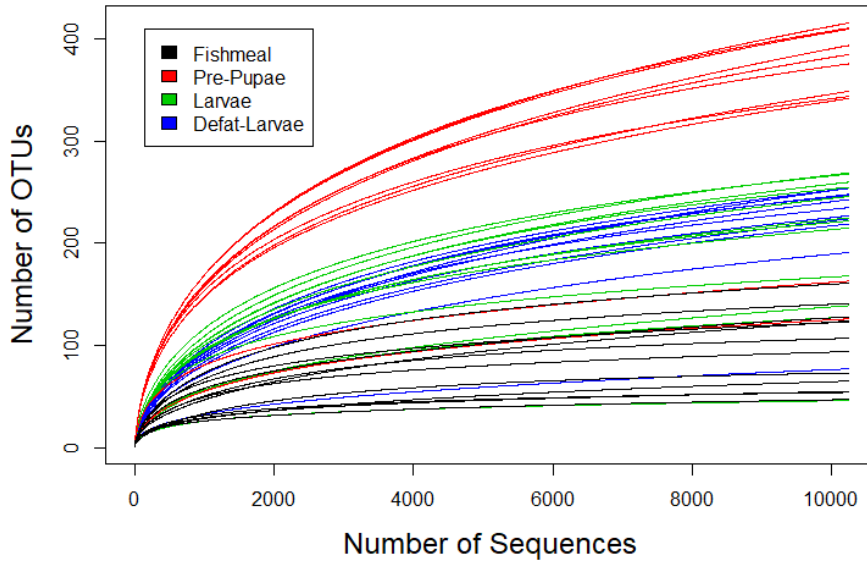
537 SE; standard error of the mean





539 **Figures**

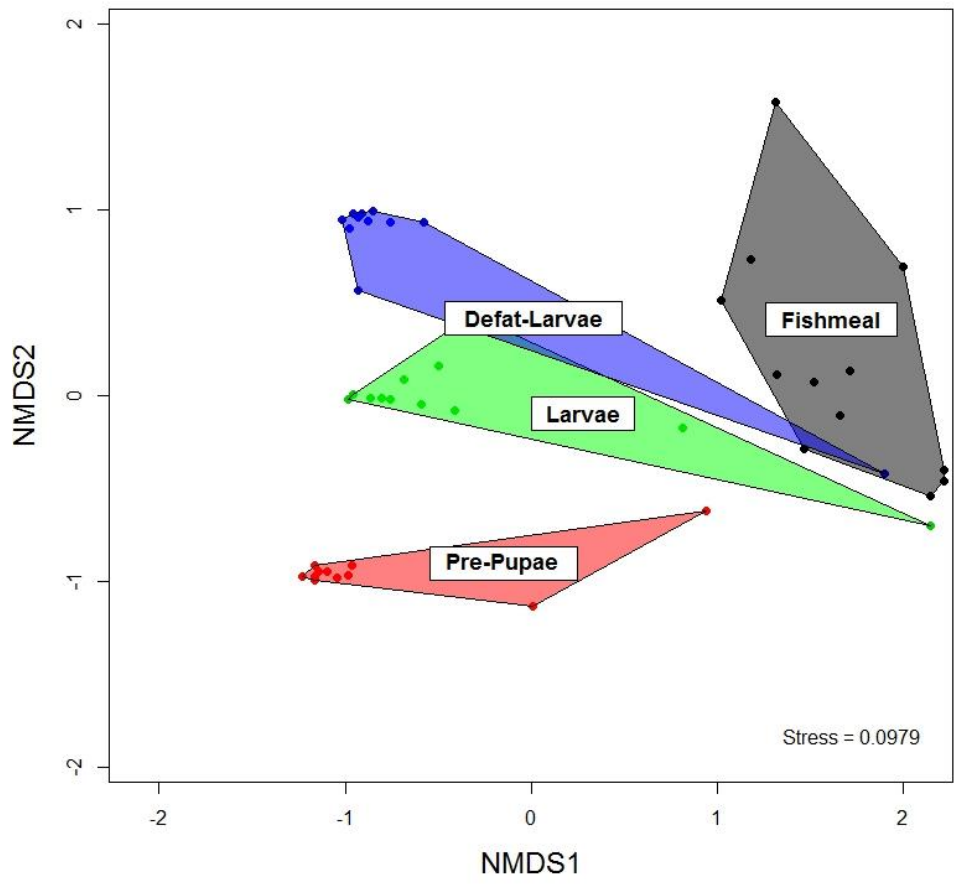
540



541

542 Fig. 1. Rarefaction curves of sequencing bacterial OTUs in the distal intestine of rainbow trout fed diets of  
543 fishmeal, larvae, defatted-larvae and pre-pupae of black soldier fly (N=46).

544

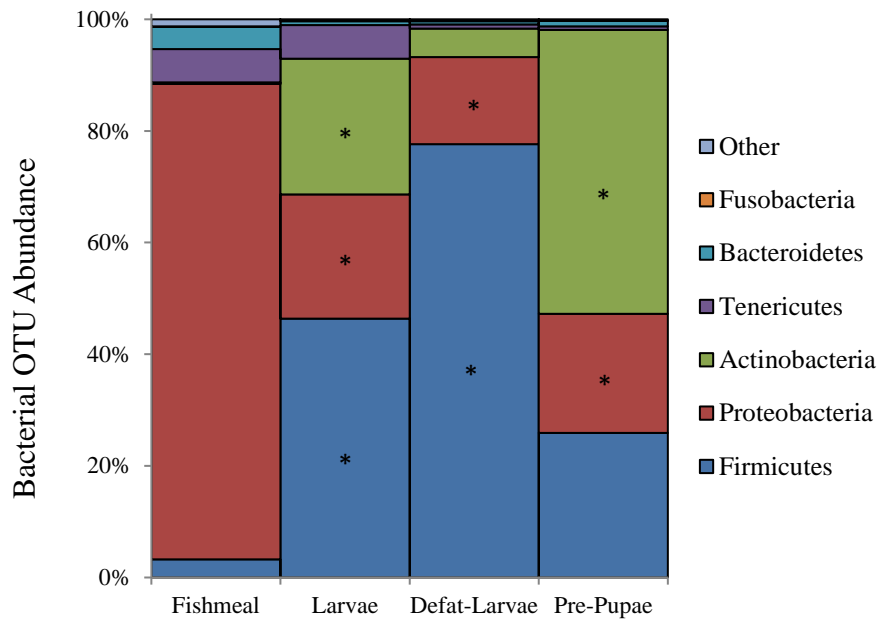


545

546 Fig. 2. Non-metric multidimensional scaling (NMDS) with 2D Bray-Curtis similarity index and after square-  
 547 root transformation of bacterial OTU counts in the distal intestine of rainbow trout fed diets of fishmeal, larvae,  
 548 defatted-larvae and pre-pupae of black soldier fly.

549

550

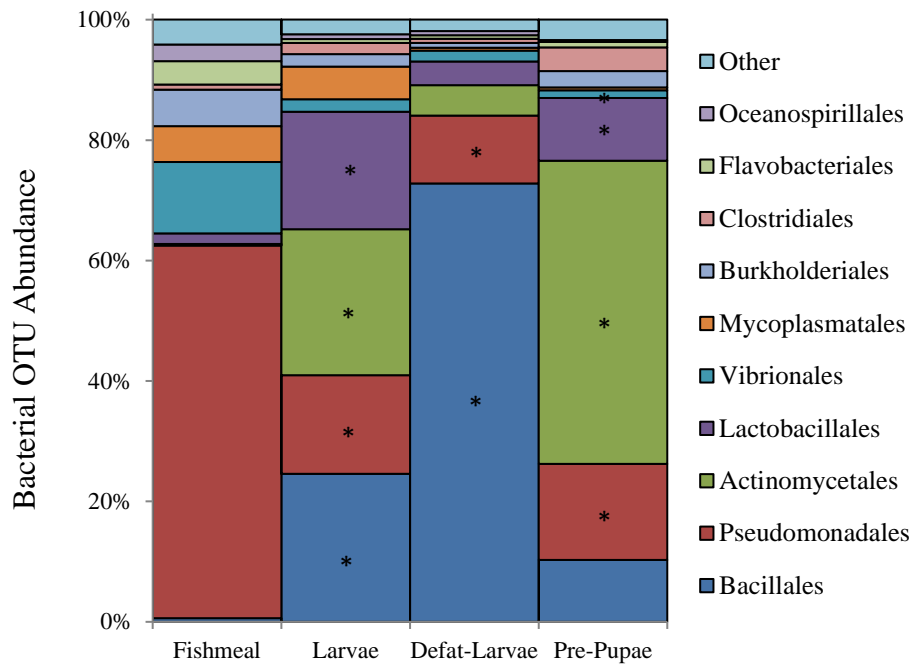


551

552 Fig. 3. Mean relative abundance of bacterial OTUs (grouped on phyla level) in the distal intestine of rainbow  
553 trout fed diets of fishmeal, larvae, defatted-larvae and pre-pupae of black soldier fly. The \* symbol indicates a  
554 significant difference compared with the fishmeal diet ( $p < 0.05$ ).

555

556



558

559

Fig. 4. Mean relative abundance of bacterial OTUs (grouped on order level) in the distal intestine of rainbow trout fed diets of fishmeal, larvae, defatted-larvae and pre-pupae of black soldier fly. The \* symbol indicates a significant difference compared with the fishmeal diet ( $p < 0.05$ ).

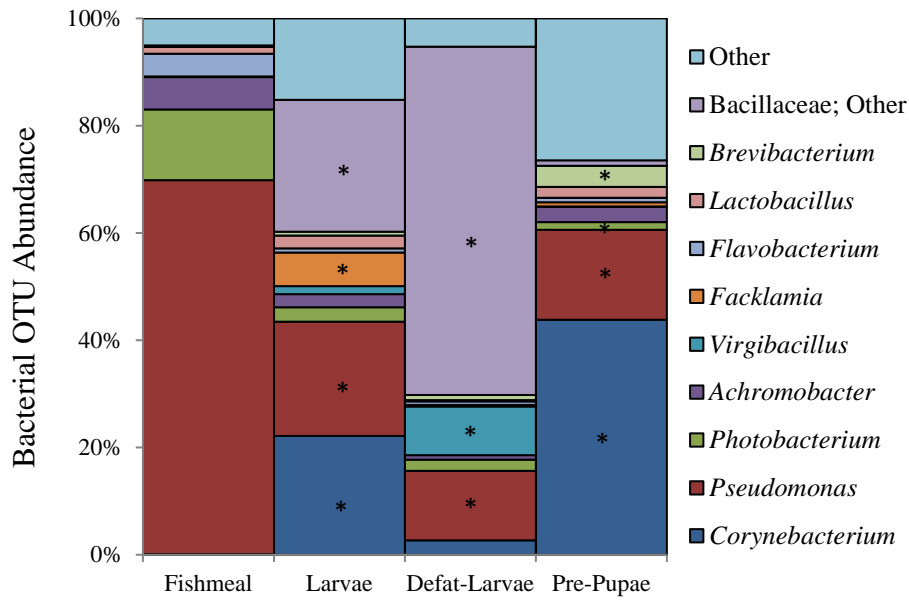
560

561

562

563

564



565

566 Fig. 5. Mean relative abundance of bacterial OTUs (grouped on genus level) with >1% abundance in the distal  
567 intestine of rainbow trout fed diets of fishmeal, larvae, defatted-larvae and pre-pupae of black soldier fly. The \*  
568 symbol indicates a significant difference compared with the fishmeal diet (p<0.05).

569