

Title: Archaeological assessment reveals Earth's early transformation through land use

Authors: ARCHAEOGLOBE Project [Stephens et al.]

5 **Abstract:** Environmentally transformative human use of land accelerated with the emergence of agriculture, but the extent, trajectory, and implications of these early changes are not well understood. An empirical global assessment of land use from 10,000 BP to 1850 CE reveals a planet largely transformed by hunter-gatherers, farmers and pastoralists by 3,000 years ago, significantly earlier than land-use reconstructions commonly used by Earth scientists. Synthesis
10 of knowledge contributed by over 250 archaeologists highlighted gaps in archaeological expertise and data quality, which peaked at 2000 BP and in traditionally studied and wealthier regions. Archaeological reconstruction of global land-use history illuminates the deep roots of Earth's transformation through millennia of increasingly intensive land use, challenging the emerging Anthropocene paradigm that anthropogenic global environmental change is mostly
15 recent.

One Sentence Summary: A map of synthesized archaeological knowledge on land use reveals a planet transformed by hunter-gatherers, farmers and pastoralists by 3,000 years ago.

20 Main Text:

Human societies have transformed and managed landscapes for thousands of years, altering global patterns of biodiversity, ecosystem functioning, and climate (1–6). Despite increasing interest in the early global environmental changes caused by human activities, from changes in fire regimes and wild animal and plant populations by hunter-gatherers to increasingly intensive
25 forms of agriculture, the global extent, intensity, temporal trajectory, and environmental consequences of Earth's transformation through human land use remain poorly understood outside the archaeological community (7–9). Partly as a result, geologists and others have tended to interpret anthropogenic global environmental change and the onset of the Anthropocene as largely recent (7).

30 There is ample evidence supporting human transformation of environments around the world beginning with late-Pleistocene hunting and gathering societies and increasing throughout the most recent interglacial interval with the emergence of agricultural strategies and formation of urbanized societies. The onset of agricultural land use is implicated in anthropogenic global environmental changes ranging from greenhouse gas emissions and climate change (5, 6, 10) to widespread deforestation, soil erosion, and altered fire regimes, as well as species introductions,
35 invasions, and extinctions (4, 8, 11). Such changes are evident even in tropical rainforests and savanna environments long considered pristine (The "Pristine Myth"; (12, 13)). Yet existing models of long-term changes in global land use (5, 14, 15) differ substantially in their representation of these early transformations (8, 16), largely owing to limited incorporation of
40 disparate empirical data from archaeology and palaeoecology (17, 18). As a result, global models and assessments of early anthropogenic influence on climate, habitats, biodiversity and other environmental changes remain poorly characterized (4, 10, 18, 19).

45 There is increasing demand in both the vegetation modelling and climate modelling communities
for empirically based maps of past land use, both to drive advanced models of human-
environment interaction and to compare with palaeoecological data. Efforts to map land-cover
change over the past 10,000 years from pollen data have increased during the last decade and
high quality regional reconstructions are now available for Europe and the Northern Hemisphere
(20–24). However, global reconstructions that combine both land-use and land-cover change
50 using a range of data sources are rare (18, 25) and have difficulty incorporating environmental
data from archaeological sites (26). Here we present a global assessment of archaeological expert
knowledge on land use from 10,000 BP to 1850 CE, demonstrating that existing global
reconstructions underestimate the impact of early human land use on Earth’s current ecology.

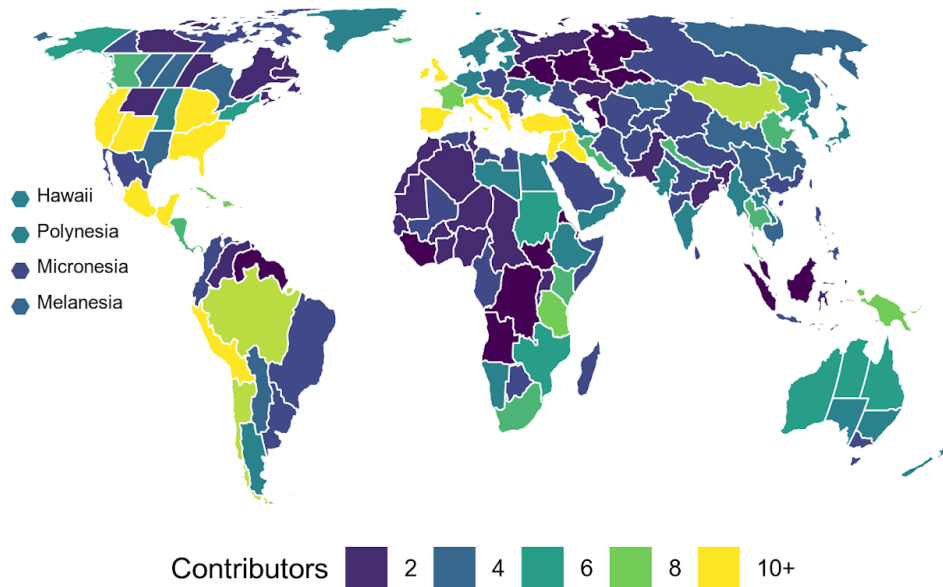
A global synthesis of archaeological knowledge

55 Although archaeologists often study human alterations of environments, large-scale syntheses
are rare, and most studies are qualitative or have a local or specialized topical focus (e.g., (27–
33)). To assess and integrate archaeological knowledge towards synthesis at a global scale, the
ArchaeoGLOBE project used a crowdsourcing approach (34). Archaeologists with land-use
60 expertise were invited to contribute to a detailed questionnaire describing levels of land-use
knowledge at ten time intervals across 146 regional analytical units covering all continents
except Antarctica. Contributors selected individual regions where they had expertise; 255
individual archaeologists completed a total of 711 regional questionnaires, resulting in complete,
though uneven, global coverage (Fig. 1; Table S1). The result is an expert based meta-analysis
65 that uses semi-subjective (ranked) survey data to generate regional assessments of land use over
time.

Regional-scale archaeological knowledge contributions were sufficient to assess land-use
changes in all 146 regions between 10,000 BP and 1850 CE (Figs. 1 and 2). Overall, self-
reported regional land-use expertise increased linearly from 10,000 BP, peaked at 2,000 BP and
dropped off sharply thereafter (Fig. 2B), reflecting the decreasing emphasis on environmental
70 archaeological methods in time periods with more abundant material remains and/or historical
records. Quality of archaeological data pertaining to past land use (Fig. 2C), determined by the
pervasiveness of archaeological surveys as well as floral and faunal analyses in each region (see
SM for rubric), followed a similar trend to that for expertise, though the peak was somewhat
later, more pronounced, and the drop-off less severe.

75

A



B

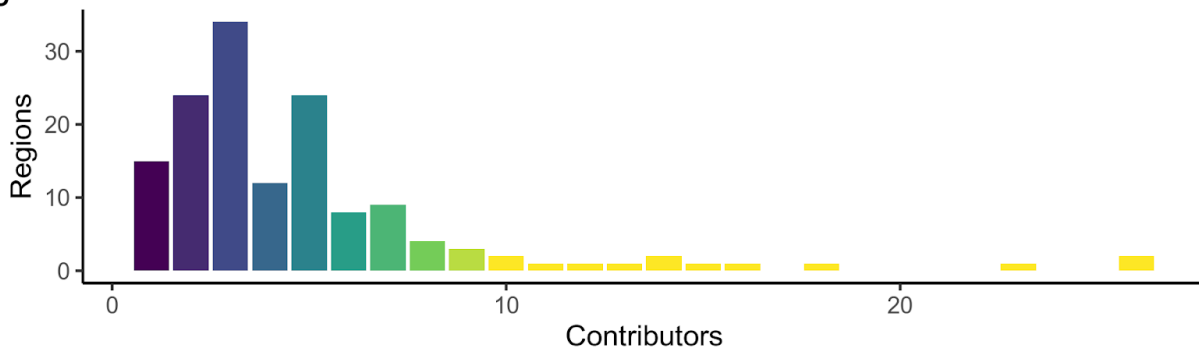


Fig. 1: Archaeological knowledge contributions. A) Geographic distribution of knowledge contributions across 146 regions. Four island regions at left are aggregated into indicator panels with exaggerated areas. Eckert IV projection. B) Histogram showing the distribution of contributions across regions, n = 711.

80

85

Global trends in expertise and data quality, and in published excavations, were heterogeneous across the globe, with consistently higher expertise and data quality across time in regions including, but not limited to, sections of Southwest Asia, Europe, Northern China, Australia, and North America, almost certainly reflecting a greater intensity of archaeological research in these areas. Other areas evidenced relatively low expertise and data quality until the most recent periods; especially sections of Africa, Southeast Asia, and South America.

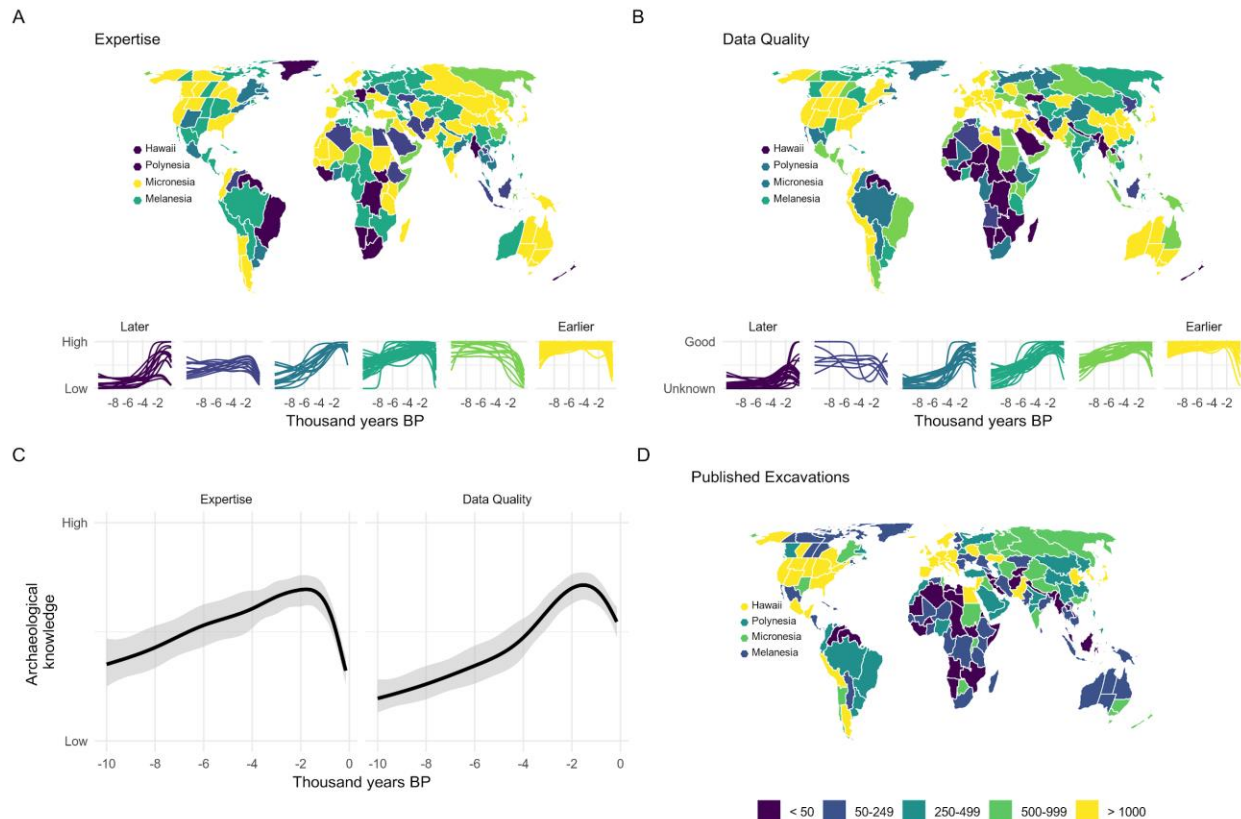
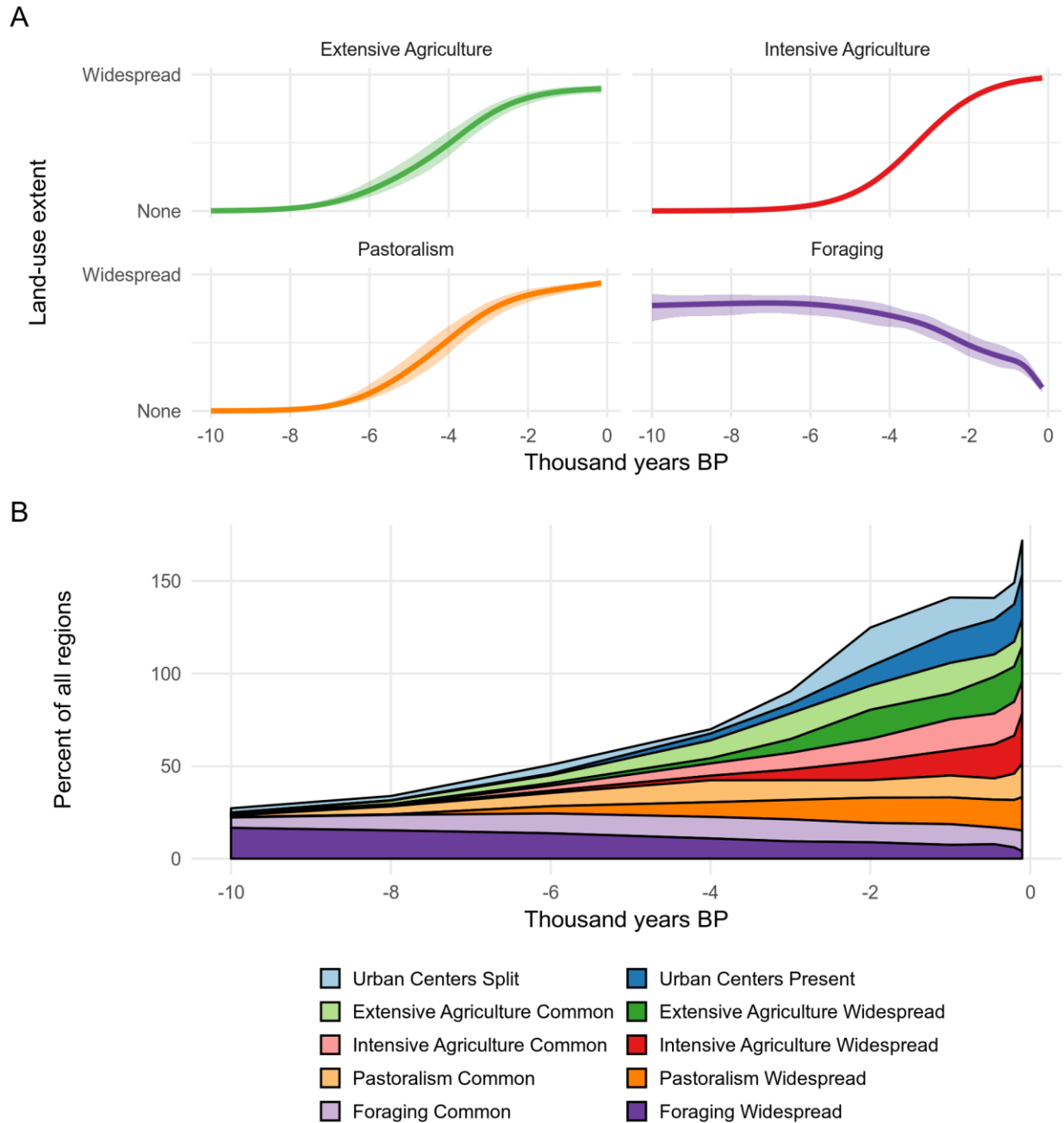


Fig. 2: Archaeological expertise, data quality, and published excavations. A) Regional trends in land-use expertise estimated using a generalized additive mixed model, grouped according to a k-means clustering algorithm to show regions with similar temporal trends. B) Regional trends in data quality. C) Global trends in expertise and data quality with 95% confidence intervals. D) Estimated number of published excavations per region.

95 **Global patterns of regional land-use change**

In 120 regions (82% of all regions, 88% of inhabited regions at 10,000 BP), foraging (practices of foraging, hunting, gathering and fishing) was common (practiced across 1% to 20% of land in region) or widespread (practiced across more than 20% of region) at 10,000 BP, and declined thereafter (Figs. 3A & 4B). Foraging was less than widespread in 40% of all regions by 8,000 BP, a decline that expanded to 63% of regions by 3,000 BP. By 1850 CE, 73% of regions were assessed with less than widespread foraging, with 51% at the minimal (practiced across <1% of land in region) or none prevalence levels.

Regional trends of foraging (Figs. 4B & S6D), reveal early declines from 10,000-6,000 BP in Southwest Asia, with other regions exhibiting declines in foraging lifeways either gradually, beginning circa 4,000 BP, or with hardly any declines at all until after 3,000 BP. This pattern is congruent with recent global assessments indicating that the majority of domesticated species appeared in the interval from 8,000-4,000 BP, with a smaller number in earlier intervals (28).



110 **Fig. 3: Summary of global land-use trends.** A) Generalized additive mixed model trends for
the extent of each land-use type across all regions, with 95% confidence intervals. B)
Cumulative summary of regions per land-use category based on consensus assessments
(Common > 1% to 20% regional land area; Widespread > 20% regional land area), along with
presence or absence of urban centers. Categories are non-exclusive, resulting in plot values
115 >100% of all regions.

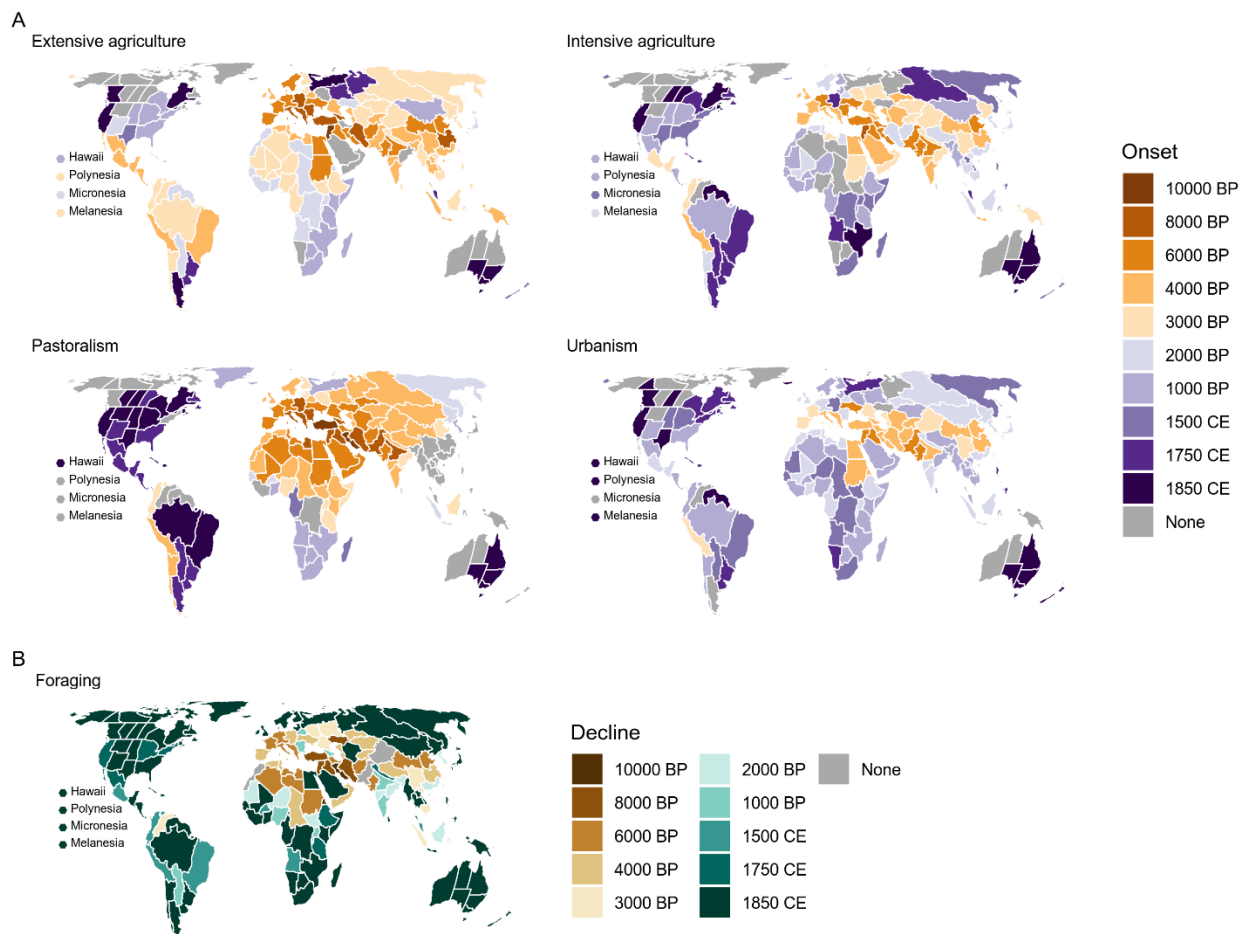


Fig. 4: Regional onsets of land-use categories and decline of foraging. A) Onsets represent the earliest time step assessed at the “common” prevalence level (1-20% land area) for extensive agriculture, intensive agriculture, and pastoralism; the earliest time step assessed as “present” for urbanism. B) Decline represents the latest time step assessed at the “common” prevalence level for foraging.

The current dataset draws attention to the prevalence of agricultural economies across the globe (Fig. 4A), rather than focusing on centers of initial domestication, of which there are now an estimated 11 worldwide (28). At 10,000 BP these centers were limited to minimal or common components in parts of Southwest Asia. Subsequently, agriculture became much more widespread both through secondary dispersal, from Southwest Asia and eastern China, as well as through new domestications in the Americas, New Guinea, and Africa. Thus at 6,000 BP, 42% of land units had at least minimal extensive agriculture (swidden/shifting cultivation and other forms of non-continuous cultivation) and it was common in over 14% of units. Intensive agriculture (all forms of continuous cultivation, see SM for full definitions) was geographically constricted (the Mediterranean, Southwest Asia, South Asia, and southern China) and common in only a few regions (12 at 6,000 BP) of suitable climatic conditions until 4000-3000 BP, only spreading more broadly after 2000 BP (65 regions with at least common intensive agriculture at 2,000 BP).

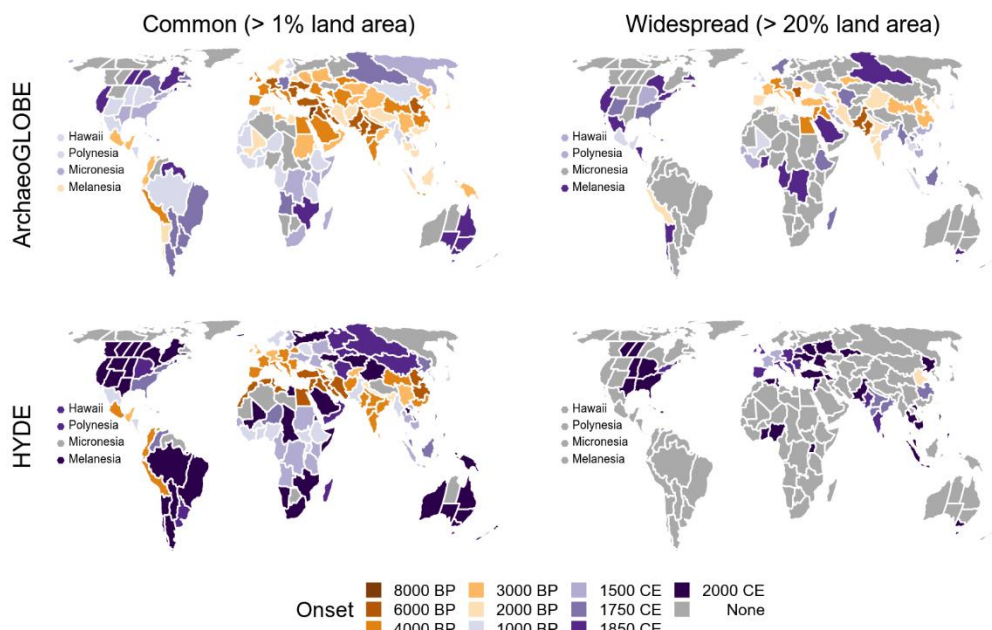
140 This study can also inform our understanding of the relationships between different modes of land use. Pastoralism was connected to agricultural centers of origin in Southwest Asia, East Asia, and the Andes, suggesting a close relationship between both types of production. By 10,000 BP, both agriculture and pastoralism were established in the earliest source regions with a focus first around Southwest Asia and the Mediterranean, but by 8,000 BP, pastoralism had spread farther from Southwest Asia, perhaps due to the proximity of this region to arid environments where herding was more adaptable than farming (Fig. 4A). In the Americas, pastoralism was restricted to its origin in the Andes (present from 8,000 BP) until after 1500 CE with the introduction of western domesticates.

145 After 6,000 BP, the geographic spread of extensive agriculture shows a markedly different pattern than that of pastoralism, due to its dispersal from additional source locations in East Asia and the Americas. Over the same time period, pastoralism spread across northern Africa and Central Asia and was common or widespread across much of Eurasia and Africa by 4,000 BP, including many regions where neither form of agriculture was common until between 4,000-150 3,000 BP. It was not until 3,000 BP that extensive agriculture (75 regions) was practiced commonly at a greater geographic scale than pastoralism (64 regions). Patterns of regional land use depicted in Figure 4 demonstrate the importance of pastoralist production across arid regions, including arid and northern regions where agriculture was unsuitable, and demonstrate that the type of management practiced on western Eurasian herd animals was highly adaptable and 155 transferable.

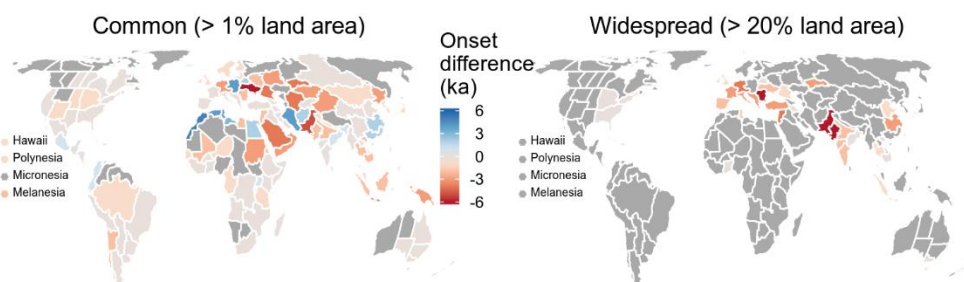
Early onset of intensive land use: assessments vs. models

Regional onsets of intensive agriculture described by archaeologists were generally earlier than estimates of cultivated crop areas derived from the most commonly used spatially explicit global reconstruction of land-use history (the HYDE dataset (14)). These findings complement previous 160 regional (e.g., Europe) land-cover studies based on paleoecological data (35, 36). Of the 130 ArchaeoGLOBE regions currently making up Earth's agricultural regions (regions with >1% crop area in HYDE at 2000 CE), 69 archaeological onsets were earlier when assessed at the "common" level, in regions encompassing 54% of global crop area at 2000 CE (Fig. 5C), and 165 >67 were earlier at the "widespread" level (56% of global crop area at 2000 CE; Fig. 5D). Though 26 archaeological onsets at the common level were later than HYDE, including 13 regions later by >1,000 years (8.4% of global crop area at 2000 CE), ArchaeoGLOBE onsets were >1000 years earlier in 27 regions encompassing 21.8% of global crop area in 2000. At the widespread level, archaeological onsets were later by <=250 years in just 3 regions (5% of 2000 170 global crop area), and earlier by >1000 years in 21 regions accounting for 22.0% of global crop area in 2000. In contrast, a similar comparison with KK10, a less commonly applied historical land-cover change reconstruction known for representing early agricultural transformation of land, generally showed earlier onsets of intensive land use than ArchaeoGLOBE (Fig. S7; (15)).

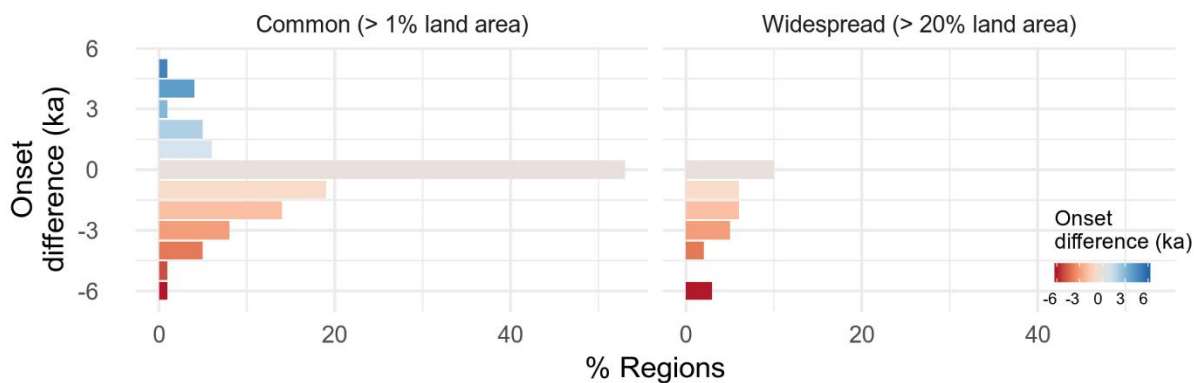
A



B



C



175

180

Fig. 5: Comparisons of agricultural onset in ArchaeoGLOBE versus HYDE. A) Onset of intensive agriculture covering $\geq 1\%$ regional area (common level) and $\geq 20\%$ regional area (widespread level) in both ArchaeoGLOBE and HYDE datasets; regions colored in grey did not surpass the associated threshold by 1850CE for ArchaeoGLOBE and 2000CE for HYDE. B) Map of differences in onset of intensive agriculture at common and widespread levels, in thousands of years; negative numbers highlight earlier ArchaeoGLOBE estimates). C)

Distributions of onset timing differences at common and widespread levels, same data and scale as B.

185 **Discussion**

The present dataset highlights broad patterns and consistencies in archaeological datasets while also identifying exceptions and knowledge gaps. Limitations in current archaeological knowledge are multi-causal but include significant geographical variability in total number of respondents, expertise level, and data quality. In addition, though rigorous efforts were made to recruit archaeological knowledge contributions as widely as possible, biases in the dataset also derive from the anglophone orientation of key project investigators, as well as the limitations of their professional networks. These biases exacerbate historical geographical biases in the pursuit and construction of archaeological knowledge, including the application of environmental archaeological methods. Though rarely the subject of formal study, our data suggest that the breadth of global archaeological knowledge differs greatly from one region to another due to the varying economic and socio-political conditions under which archaeologists work, the cumulative legacy and positive feedback of early research interests, and the physical accessibility (both real and perceived) of archaeological sites (see also (37)).

Though ArchaeoGLOBE respondents do not necessarily form a representative sample of global archaeologists, it is still clear that several regions have seen more intensive archaeological research. Regional hotspots of intensive study are concentrated heavily in Europe, Southwest Asia, and portions of the Americas; a pattern also observed for ecological field sites (38) and UNESCO World Heritage sites (39).

Regional cold spots that have received much less attention concentrate in Southeast Asia, and Central and West Africa where wealth disparities and legacies of colonialism have limited the resources available for archaeological fieldwork and training, and where the application of environmental archaeology has accordingly been limited. Nonetheless, experts in these regions were able to contribute generalized accounts of land-use trajectories. For instance, archaeobotanical investigations of the cultivation and domestication of indigenous cereals in Sub-Saharan Africa (40–42) are beginning to shed light on earlier and more extensive forms of agriculture than had previously been assumed. Similar less-investigated indigenous agricultural practices likely characterize parts of Southeast Asia and northern India during the mid-Holocene (e.g., (43–45)). In exposing data gaps and emerging evidence in archaeological knowledge of past land use, the ArchaeoGLOBE project has proved to be a generative tool that can help archaeologists prioritize future collection of empirical data and local capacity building to improve the reliability of global perspectives.

Deepening the Anthropocene

Archaeologists and anthropologists have been able to confidently, albeit broadly, define “domestication” and to a lesser extent “agriculture” (e.g., (28)). However, “hunting and gathering” proves to be more a varied and complex subsistence economy than originally conceptualized, and its definition generates rigorous debate among scholars by blurring countless variances in land use, resource management, and anthropogenic environmental change. Foraging, or “foraging/hunting/gathering/fishing”, was used here to describe subsistence economies and

225 land-use practices that generally exhibit lower amounts of direct human alteration of ecosystems
and control of plant and animal life cycles (see (46)). However, within this broad category are
many forms of resource procurement and land management that have led to drastic changes in
environments, and we now recognize that foragers may have initiated dramatic and sometimes
irreversible environmental change (e.g., (47)). In addition to altering biotic communities around
230 the world through transport and propagation of favored species, extensive early land use by
hunter-gatherers may also indicate widespread use of fire to enhance success in hunting and
foraging (48). Systematic landscape burning has implications for the global carbon cycle through
increased greenhouse gas emissions, for water-cycles through changes in vegetation and
evapotranspiration, and for temperatures through changes in albedo (49, 50).

235 Globally widespread evidence of hunter-gatherer land use thus indicates that ecological
conditions across most of the terrestrial biosphere were influenced significantly by human
activities even before the domestication of plants and animals. While our dichotomous parsing of
hunter-gatherers and agriculturalists is therefore primarily operational, such divisions are still
useful. Our data seem to support a unilineal trajectory towards increasingly intensive land use
240 and the replacement of foraging with pastoralism and agriculture, a process that appears largely
irreversible over the long term. While this is broadly true, such trends also mask more complex
pathways, as well as reversals, at the local scale in numerous regions. In some parts of the world
agriculture did not simply replace foraging, but merged with it and ran in parallel for some time,
either as a patchwork of different peoples or seasonal shifts. The environmental effects of such
245 mixed-mode land use are difficult to see in the archaeological/palaeoecological record, and
perhaps often missed in the dichotomous view of replacement by more advanced systems.
However, through time, as land became increasingly densely occupied and land use more
intensive, opportunities for flexibility in subsistence strategies and the resilience this supported
have been reduced.

250 By engaging a large segment of the research community in novel forms of synthesis to explore
the deep history of human influence on diverse environments around the world, this study uses
archaeology to advance broader scientific understanding of land-use change over the last 10,000
years, a critical period in the environmental and social history of our planet (51). Future work
should examine archaeologically derived land-use knowledge in terms of its consilience with
255 palaeoecological evidence of vegetation cover change in the past, including potential climatic
drivers of recorded changes (e.g., (20–24)).

This first global archaeological assessment of early land use reveals a much earlier and more
widespread global onset of intensive agriculture than the spatially-explicit global historical
reconstruction most commonly used to inform modelling studies of pre-industrial vegetation and
260 climate change (HYDE; (14)). However, archaeological onsets of intensive agriculture appeared
slightly later than in the less widely used KK10 reconstruction (5). Substantial methodological
differences and uncertainties between archaeological estimates and historical reconstructions
mean that comparisons among ArchaeoGLOBE, HYDE, and KK10 must be treated with caution
(52). However, the regional land-use estimates of this study represent a first step towards more
265 accurate and empirically grounded spatially-explicit global reconstructions of long-term changes
in land-use by providing reference points and procedural approaches to constrain and correct
these biases in future work. Our hope is that the global archaeological assessment presented here,
and the collaborative approach it represents, will help stimulate and support future efforts,
including work currently in progress through the PAGES LandCover6k initiative (18, 25),

270 towards the common goal of understanding early land use as a driver of long-term global
environmental changes across the Earth system, including changes in climate.

Conclusion

275 Global synthesis of regional archaeological knowledge on land-use changes over the past 10,000
years reveals the early onset and vast spatial extent of human actions that reshaped landscapes,
ecosystems, and potentially climate over millennia in a manner that challenges the conventional,
“mostly recent”, paradigm of anthropogenic Earth system change (53). Despite the central role of
these long-term social-environmental changes in producing the transformed planet of the
280 Anthropocene, the archaeological evidence for them has largely been inaccessible to and unused
by most Earth system scientists. It is time for this to change. This study is a first step in a long
process of building global, empirically grounded and spatially explicit reconstructions of past
land use. At the same time, the focus on global trends illustrated through this analysis should be
tempered by the critical need to investigate and understand their production through local and
regional social-environmental contexts, processes, and trajectories, appreciating the full spectrum
285 of social-environmental variations present within land-use systems that occurred throughout
human history. For the work ahead, open collaborative global synthesis of archaeological
knowledge should remain a key tool for more deeply investigating and understanding the
bidirectional coupling of human and environmental changes that have and will continue to shape
the future of life on Earth.

290

References and Notes:

1. B. D. Smith, M. A. Zeder, The onset of the Anthropocene. *Anthropocene*. **4**, 8–13 (2013).
2. P. V. Kirch, ARCHAEOLOGY AND GLOBAL CHANGE: The Holocene Record. *Annu. Rev. Environ. Resour.* **30**, 409–440 (2005).
- 295 3. W. F. Ruddiman, E. C. Ellis, J. O. Kaplan, D. Q. Fuller, Defining the epoch we live in. *Science*. **348**, 38–39 (2015).
4. N. L. Boivin *et al.*, Ecological consequences of human niche construction: Examining long-term anthropogenic shaping of global species distributions. *Proc. Natl. Acad. Sci. U. S. A.* **113**, 6388–6396 (2016).
- 300 5. J. O. Kaplan *et al.*, Holocene carbon emissions as a result of anthropogenic land cover change. *Holocene*. **21**, 775–791 (2011).
6. D. Q. Fuller *et al.*, The contribution of rice agriculture and livestock pastoralism to prehistoric methane levels: An archaeological assessment. *Holocene*. **21**, 743–759 (2011).
7. E. Ellis, M. Maslin, N. Boivin, A. Bauer, Involve social scientists in defining the Anthropocene. *Nature News*. **540**, 192 (2016).
- 305 8. E. C. Ellis *et al.*, Used planet: a global history. *Proc. Natl. Acad. Sci. U. S. A.* **110**, 7978–7985 (2013).
9. D. M. J. S. Bowman *et al.*, The human dimension of fire regimes on Earth. *J. Biogeogr.* **38**, 2223–

- 2236 (2011).
- 310 10. W. F. Ruddiman *et al.*, Late Holocene climate: Natural or anthropogenic? *Rev. Geophys.* **54**, 93–118 (2016).
11. E. C. Ellis, Anthropogenic transformation of the terrestrial biosphere. *Philos. Trans. A Math. Phys. Eng. Sci.* **369**, 1010–1035 (2011).
- 315 12. P. Roberts, C. Hunt, M. Arroyo-Kalin, D. Evans, N. Boivin, The deep human prehistory of global tropical forests and its relevance for modern conservation. *Nat Plants.* **3**, 17093 (2017).
13. F. Marshall *et al.*, Ancient herders enriched and restructured African grasslands. *Nature* (2018), doi:10.1038/s41586-018-0456-9.
14. K. K. Goldewijk, A. Beusen, J. Doelman, E. Stehfest, Anthropogenic land use estimates for the Holocene--HYDE 3.2. *Earth System Science Data.* **9**, 927–953 (2017).
- 320 15. J. O. Kaplan, K. M. Krumhardt, The KK10 Anthropogenic Land Cover Change scenario for the preindustrial Holocene, link to data in NetCDF format, supplement to: Kaplan, Jed O; Krumhardt, Kristen M; Ellis, Erle C; Ruddiman, William F; Lemmen, Carsten; Klein Goldewijk, Kees (2011): Holocene carbon emissions as a result of anthropogenic land cover change. *The Holocene*, 21(5), 775-791 (2011), , doi:10.1594/PANGAEA.871369.
- 325 16. M.-J. Gaillard *et al.*, Holocene land-cover reconstructions for studies on land cover-climate feedbacks. *Clim. Past.* **6**, 483–499 (2010).
17. K. Klein Goldewijk, M.-J. Gaillard, K. Morrison, M. Madella, N. Whitehouse, Uncovering the past: multidisciplinary research on historic land cover and land use. *PAGES Mag.* **24**, 81–81 (2016).
- 330 18. M.-J. Gaillard, K. D. Morrison, M. Madella, N. Whitehouse, Past land-use and land-cover change: the challenge of quantification at the subcontinental to global scales. *PAGES Mag.* **26** (2018), pp. 3–3.
19. C. N. H. McMichael, F. Matthews-Bird, W. Farfan-Rios, K. J. Feeley, Ancient human disturbances may be skewing our understanding of Amazonian forests. *Proc. Natl. Acad. Sci. U. S. A.* **114**, 522–527 (2017).
- 335 20. A. Dawson *et al.*, Finding the magnitude of human-induced Northern Hemisphere land-cover transformation between 6 and 0.2 ka BP. *PAGES Mag.* **26**, 34–35 (2018).
21. J. W. Williams, P. Tarasov, S. Brewer, M. Notaro, Late Quaternary variations in tree cover at the northern forest-tundra ecotone. *Journal of Geophysical Research: Biogeosciences.* **116** (2011) (available at <https://onlinelibrary.wiley.com/doi/pdf/10.1029/2010JG001458>).
- 340 22. B. Pirzamanbein *et al.*, Creating spatially continuous maps of past land cover from point estimates: A new statistical approach applied to pollen data. *Ecol. Complex.* **20**, 127–141 (2014).
23. A.-K. Trondman *et al.*, Pollen-based quantitative reconstructions of Holocene regional vegetation cover (plant-functional types and land-cover types) in Europe suitable for climate modelling. *Glob. Chang. Biol.* **21**, 676–697 (2015).
- 345 24. M. Zanon, B. A. S. Davis, L. Marquer, S. Brewer, J. O. Kaplan, European Forest Cover During the Past 12,000 Years: A Palynological Reconstruction Based on Modern Analogs and Remote Sensing.

- Front. Plant Sci.* **9**, 253 (2018).
25. LandCover6k Land-Use Group Members *et al.*, Global-scale comparisons of human land use: developing shared terminology for land-use practices for global change. *PAGES Mag.* **26**, 8–9 (2018).
26. T. A. Kohler, P. I. Buckland, K. W. Kintigh, R. K. Bocinsky, J. Terstriep, Paleodata for and from archaeology. *26*, 68–69 (2018).
27. J. W. Lewthwaite, A. Sherratt, Chronological atlas. *Cambridge Encyclopedia of Archeology, Cambridge Univ. Press, Cambridge* (1980).
28. G. Larson *et al.*, Current perspectives and the future of domestication studies. *Proc. Natl. Acad. Sci. U. S. A.* **111**, 6139–6146 (2014).
29. J. M. Erlandson, T. J. Braje, Archeology and the Anthropocene. *Anthropocene.* **4**, 1–7 (2013).
30. K. W. Kintigh *et al.*, Grand challenges for archaeology. *Proc. Natl. Acad. Sci. U. S. A.* **111**, 879–880 (2014).
31. B. S. Arbuckle *et al.*, Data sharing reveals complexity in the westward spread of domestic animals across Neolithic Turkey. *PLoS One.* **9**, e99845 (2014).
32. S. S. Downey, W. R. Haas Jr, S. J. Shennan, European Neolithic societies showed early warning signals of population collapse. *Proc. Natl. Acad. Sci. U. S. A.* **113**, 9751–9756 (2016).
33. K. W. Kintigh *et al.*, Cultural Dynamics, Deep Time, and Data: Planning Cyberinfrastructure Investments for Archaeology. *Advances in Archaeological Practice.* **3**, 1–15 (2015).
34. S. Bartling, S. Friesike, Eds., *Opening Science: The Evolving Guide on How the Internet is Changing Research, Collaboration and Scholarly Publishing* (Springer, Cham, 2014).
35. A. Bevan *et al.*, The changing face of the Mediterranean – Land cover, demography and environmental change: Introduction and overview. *The Holocene.* **29** (2019), pp. 703–707.
36. N. Roberts *et al.*, Europe’s lost forests: a pollen-based synthesis for the last 11,000 years. *Sci. Rep.* **8**, 716 (2018).
37. T. A. Surovell *et al.*, THE END OF ARCHAEOLOGICAL DISCOVERY. *Am. Antiq.* **82**, 288–300 (2017).
38. L. J. Martin, B. Blossey, E. Ellis, Mapping where ecologists work: biases in the global distribution of terrestrial ecological observations. *Front. Ecol. Environ.* **10**, 195–201 (2012).
39. B. S. Frey, P. Pamini, L. Steiner, Explaining the World Heritage List: an empirical study. *Int. Rev. Law Econ.* **60**, 1–19 (2013).
40. K. Manning, R. Pelling, T. Higham, J.-L. Schwenniger, D. Q. Fuller, 4500-Year old domesticated pearl millet (*Pennisetum glaucum*) from the Tilemsi Valley, Mali: new insights into an alternative cereal domestication pathway. *J. Archaeol. Sci.* **38**, 312–322 (2011).
41. F. Winchell, C. J. Stevens, C. Murphy, L. Champion, D. Fuller, Evidence for Sorghum Domestication in Fourth Millennium BC Eastern Sudan: Spikelet Morphology from Ceramic

- Impressions of the Butana Group. *Curr. Anthropol.* **58**, 673–683 (2017).
- 385 42. A. U. Kay *et al.*, Diversification, Intensification, and Specialization: Changing land use in western Africa from 1800 BC to AD 1500. *Journal of World Prehistory* (in press).
43. T. Denham, Early farming in Island Southeast Asia: an alternative hypothesis. *Antiquity.* **87**, 250–257 (2013).
44. C. O. Hunt, R. J. Rabett, Holocene landscape intervention and plant food production strategies in island and mainland Southeast Asia. *J. Archaeol. Sci.* **51**, 22–33 (2014).
- 390 45. D. Q. Fuller, C. Murphy, Overlooked But Not Forgotten: India As A Center for Agricultural Domestication. *General Anthropology.* **21**, 1–8 (2014).
46. D. Rindos *et al.*, Symbiosis, Instability, and the Origins and Spread of Agriculture: A New Model [and Comments and Reply]. *Curr. Anthropol.* **21**, 751–772 (1980).
47. R. Hames, The Ecologically Noble Savage Debate. *Annu. Rev. Anthropol.* **36**, 177–190 (2007).
- 395 48. D. M. J. S. Bowman *et al.*, Fire in the Earth system. *Science.* **324**, 481–484 (2009).
49. M. Pfeiffer, A. Spessa, J. O. Kaplan, A model for global biomass burning in preindustrial time: LPJ-LMfire (v1. 0). *Geoscientific Model Development.* **6**, 643–685 (2013).
50. N. Nakicenovic, R. Swart, Others, Emissions scenarios. Special report of the Intergovernmental panel on climate change (2000), (available at <https://www.osti.gov/etdeweb/biblio/20134132>).
- 400 51. J. H. Altschul *et al.*, Opinion: Fostering synthesis in archaeology to advance science and benefit society. *Proc. Natl. Acad. Sci. U. S. A.* **114**, 10999–11002 (2017).
52. J. Kaplan *et al.*, Constraining the Deforestation History of Europe: Evaluation of Historical Land Use Scenarios with Pollen-Based Land Cover Reconstructions. *Land.* **6**, 91 (2017).
- 405 53. W. Steffen, W. Broadgate, L. Deutsch, O. Gaffney, C. Ludwig, The trajectory of the Anthropocene: The Great Acceleration. *The Anthropocene Review.* **2**, 81–98 (2015).
54. M. Kynn, The “heuristics and biases” bias in expert elicitation. *J. R. Stat. Soc. Ser. A Stat. Soc.* **171**, 239–264 (2008).
55. S. N. Wood, *Generalized additive models: an introduction with R* (Chapman and Hall/CRC, 2017).
- 410 56. E. J. Pedersen, D. L. Miller, G. L. Simpson, N. Ross, “Hierarchical generalized additive models: an introduction with mgcv” (e27320v1, PeerJ Preprints, 2018), , doi:10.7287/peerj.preprints.27320v1.
57. M. Szumilas, Explaining odds ratios. *J. Can. Acad. Child Adolesc. Psychiatry.* **19**, 227–229 (2010).
58. B. Marwick, Computational Reproducibility in Archaeological Research: Basic Principles and a Case Study of Their Implementation. *Journal of Archaeological Method and Theory.* **24**, 424–450 (2017).
- 415 **Acknowledgments: Funding:** This material is based upon work supported by the National Science Foundation under Grant CNS 115210 awarded to E.C. Ellis in 2011. **Author contributions:** a complete list of contributions to the paper is contained in the Full Author List in a separate file. **Competing interests:** authors declare no competing

interests. **Data and materials availability:** all project data are in the public domain (CC-0) and available online on
the project's Dataverse page (<https://dataverse.harvard.edu/dataverse/ArchaeoGLOBE>, specifically
420 <https://doi.org/10.7910/DVN/CNCANQ>, <https://doi.org/10.7910/DVN/CQWUBI>). We include the entire R code
used for all the analysis and visualizations contained in this paper in our repository at
<https://doi.org/10.7910/DVN/6ZXAGT>

Supplementary Materials:

Materials and Methods

425 Figures S1-S7

Tables S1-S4

References (54-58)