

1 **Culturing the sea cucumber *Holothuria poli* in open-water Integrated Multi-Trophic**

2 **Aquaculture at a coastal Mediterranean fish farm.**

3

4 Authors:

5 Karl Cutajar¹; Lynne Falconer¹; Alexia Massa-Gallucci²; Rachel E. Cox²; Lena Schenke²;

6 Tamás Bardócz²; Angus Sharman³; Simeon Deguara²; Trevor C. Telfer¹

7 Affiliations: ¹Institute of Aquaculture, University of Stirling, Stirling, Scotland

8 ²AquaBioTech Group, Mosta, Malta

9 ³Malta Fish Farming Ltd., Marsaxlokk, Malta

10

11 Corresponding Author: Karl Cutajar

12 Address: Institute of Aquaculture, University of Stirling, Stirling, FK9 4LA, Scotland UK

13 Email address: kac4@stir.ac.uk

14

15

16

17

18

19 **Abstract**

20 The survival and growth of the sea cucumber *Holothuria poli* were assessed during a 12-
21 month field study when cultured at a commercial fish farm in Malta as part of an integrated
22 multi-trophic aquaculture (IMTA) system. Sea cucumbers were cultured directly below a fish
23 cage at 0 m, E0, at 10 m (E10) and 25 m (E25) distances from the cage and at two reference
24 sites (R1 and R2) located over 800 m away from the fish farm. Mass mortalities were recorded
25 at E0 within the first month of the study due to smothering by settled wastes. All individuals
26 died at one of the reference sites, R1, by the end of the study. After deducting missing sea
27 cucumbers, survival rates at E10 (23%) and E25 (33%) from the fish cage were similar to the
28 remaining reference site (R2) (27%). Stocking density and physical disturbances to the sea
29 cucumber cage setup were also probable cause for the low survival rates. The relative weight
30 gain (RWG) and specific growth rates (SGR) of *H. poli* varied significantly between sites close
31 to the fish farm and the reference site. The SGR of *H. poli* at E10 ($0.18 \pm 0.02\% \text{ day}^{-1}$) and E25
32 ($0.20 \pm 0.01\% \text{ day}^{-1}$) was positive over the whole study period while no average growth was
33 recorded at the reference site ($-0.04 \pm 0.07\% \text{ day}^{-1}$) over the same period. Differences in RWG
34 and SGR were recorded throughout the study. The overall growth observed in *H. poli* by
35 January was followed by a drop in growth rate across all sites and an increase in SGR at E25
36 in July. Slower growth rates were observed as water temperature approached 15 °C. The
37 results indicated that the sediments near the commercial fish cage provided an enriched
38 source of food that supported significantly better growth in *H. poli*. This suggests that *H. poli*
39 in IMTA might have the potential to uptake organic farm waste and increase aquaculture
40 production, albeit with important considerations for setup design and stocking density.

41

42

43

44 **Keywords:**

45 Sea cucumber, IMTA, sustainability, biodeposition, circular economy

46

47

48 **1. Introduction**

49 The sustainable development of aquaculture requires consideration of carrying capacity and
50 environmental impact (Ross et al., 2013). In coastal areas where competition for space is a
51 limiting factor, existing production sites may need to be optimised through innovative and novel
52 approaches for further aquaculture expansion (Barrington et al., 2009). These strategies
53 should address the widely documented effects of waste deposition from intensive marine fish
54 farming that include loss of benthic biodiversity (Mazzola et al., 2000; Kalantzi and Karakassis,
55 2006; Tomassetti et al., 2016) and changes in sediment chemistry, such as increased organic
56 carbon and oxygen depletion (Karakassis et al., 2000; Porello et al., 2005; Papageorgiou et
57 al., 2010).

58 The uptake and conversion of fish farm waste into marketable biomass by extractive
59 organisms co-cultured with fed species through integrated multi-trophic aquaculture (IMTA) is
60 often recommended as a way to diversify and maximise production while reducing the
61 environmental impact of intensive farming (Troell et al., 2009; Chopin et al., 2012). While
62 previous studies have shown the viability and efficiency of IMTA in land-based systems or
63 laboratory trials, the fewer reported cases of open-water IMTA have reported contradictory
64 growth performances for different fed-extractive species combinations (Mazzola and Sarà,
65 2001; Cheshuk et al., 2003; Handå et al., 2012; Irisarri et al., 2013, 2014; Jiang et al., 2013;
66 Giangrande et al., 2020). This demonstrates the challenges of coastal and nearshore IMTA in
67 the real-world environment.

68 Deposit-feeding sea cucumbers have been proposed as potential candidates to take up and
69 reduce the excess accumulation of organic nutrients in seafloor sediment from farm production
70 (Cubillo et al., 2016; Zamora et al., 2016). The potential of deposit-feeders to mitigate organic
71 pollution emerges from their capacity to rework as much as 10,590 kg dry sediment m⁻² year⁻¹,
72 while feeding selectively on enriched sediments (Lee et al., 2018). Sea cucumbers are not

73 only recommended for use in IMTA for their waste biomitigation potential but also for their
74 economic value (Toral-Granda et al., 2008; Purcell, 2015). High value sea cucumber species
75 are sold as premium products to meet the increasing demands of luxury seafood markets in
76 Asia. In the Mediterranean region, active fisheries exist for commercially important sea
77 cucumber species with *Holothuria poli* and the similar shallow water holothurian, *Holothuria*
78 *tubulosa* becoming increasingly popular target species (González-Wangüemert et al., 2018)
79 and favourable candidates for aquaculture (Rakaj et al., 2019). Recently, these species have
80 been increasingly harvested along the Italian coast leading to a moratorium on sea cucumber
81 fishing in Italy.

82 The little data available in literature on the growth and natural density of this species for
83 populations present in other regions of the Mediterranean is limited by variation in geographic
84 and bathymetric distribution (Francour, 1989). Similarly, the population density of the related
85 *H. tubulosa* varies across the Mediterranean within the range of 0.1 – 3.77 individuals m⁻²
86 (Coulon and Jangoux, 1993; Kazanidis et al., 2010). In the wild, *H. poli* is found in soft marine
87 sediment where naturally occurring organic content is low. Consequently, the foraging
88 behaviour and digestive capacity of *H. poli* allow this sea cucumber to effectively select and
89 assimilate organic-rich particles (Mezali and Soualili, 2013; Belbachir et al., 2014). This
90 underlies the potential importance of this species for nutrient recycling. *H. poli* is also
91 considered a benthic indicator sensitive to pollution (Harmelin et al., 1981; Mezali, 2008).
92 While high organic inputs may be an opportunity for value-added production, additional
93 nutrient inputs from a fish farm could have detrimental effects on the physiological
94 performance of the selected species.

95 In recent studies in laboratory settings and pilot-scale field experiments, sea cucumbers were
96 able to survive and grow on organic waste from finfish culture (Nelson et al., 2012; Yu et al.,
97 2012; Hannah et al., 2013; MacDonald et al., 2013; Yokoyama, 2013; Yu et al., 2014a, b). In

98 the Mediterranean, the potential of *H. tubulosa* to reduce organic waste in fish farm biodeposits
99 has been shown by the three-fold growth difference when placed under an open-water
100 commercial monoculture farm in sediment with organic carbon content 30 times higher than
101 that present in natural environment (Tolon et al., 2017a). The capacity of individual
102 holothurians to ingest up to 15.25 kg dry weight sediment m⁻² yr⁻¹, and reduce as much as
103 74.09% of organic carbon per mean total drained weight of 196 g, should lead to further
104 research into the suitability of deposit-feeding sea cucumbers to recycle and remediate
105 organically rich sediments in nearshore IMTA (Neofitou, 2019). Studies on the reduction rate
106 and absorption efficiency of organic carbon and *in situ* growth rates of *H. poli* are lacking.
107 Nonetheless, the proposed species exhibited similar growth rates as *H. tubulosa* under
108 laboratory conditions (Tolon, 2017) with comparable capacities for particle selectivity (Mezali
109 and Soualili, 2013) and higher adaptability to elevated salinities (Tolon, 2017). This suggests
110 *H. poli* could also be a good candidate for IMTA.

111 This study introduces *H. poli* as an alternative candidate to open-water IMTA in the
112 Mediterranean and aims to provide baseline information on the survival and growth
113 performance of this sea cucumber when cultured in a commercial fish farm.

114

115 **2. Materials and methods**

116 **2.1. Study site**

117 The study was set up at Malta Fish Farming Ltd., a nearshore commercial fish farm in
118 Marsaxlokk Port (35°49'39.90"N, 14°32'30.73"E), southeast Malta (Figure 1A), situated at the
119 centre of the Mediterranean. The fish species that are cultured at this nursery site include the
120 gilthead sea bream (*Sparus aurata*), the European sea bass (*Dicentrarchus labrax*), and the
121 greater amberjack (*Seriola dumerili*). Gilthead sea bream and European sea bass are

122 produced using formulated commercial feed whilst the amberjacks are fed baitfish. The farm
123 had a total annual production of 719 t and a feed conversion ratio (FCR) of 1.7 during the
124 study period.

125 The nursery site is in shallow water (depth 8-12 m) and on a seafloor characterised by
126 heterogeneous soft sediments (very fine to medium grain size). The farm is surrounded by
127 patchy distributions of seagrass, *Posidonia oceanica*. Dredged navigation channels are
128 present on the south eastern side to accommodate transshipment traffic. The reference sites,
129 R1 (35°49'55.1"N, 14°32'59.3"E) and R2 (35°49'53.5"N, 14°32'54.5"E), were located >800 m
130 north east of the fish farm in 8 m water depth. No aquaculture activity was present within a
131 600 m radius from the nursery site (Figure 1B). The simulated maximum velocity of the
132 dominant wind-driven currents from the prevailing northerly winds inside the bay never exceed
133 0.4 m s⁻¹ (Eikema and van den Boomgaard, 2007).

134

135 **2.2. Sea cucumber cage siting**

136 The spatial arrangement of the IMTA setup at the farm site (Figure 1C) was based on the
137 output of a particulate depositional model (Telfer et al., 2006; Baltadakis et al., 2020). The
138 spreadsheet-based model uses production information, hydrography, and empirically derived
139 measurements to determine the amount of organic carbon and the form of waste that is
140 dispersed from the fish farm to the environment.

141 The horizontal dispersion of unconsumed food and fish waste was modelled using site-specific
142 water current speed and directions. Production data was obtained from the farm management
143 and hydrographic data was collected at 8 m and 12 m depths over 6 weeks using a current
144 meter (Aquadopp Profiler 400Hz; Nortek, Norway). The profiler was deployed on the seabed
145 between May and June 2018, at two different locations both approximately 10-15 m from the

146 fish cages (Figure 1C). Stocking biomass, feed input, water depth, and cage dimensions were
147 incorporated into the particle depositional model to predict nutrient dispersion using a grid
148 resolution of 5 m x 5 m. Input data on food losses and settling velocities for feed and faecal
149 particles for the different cohorts of cultured fish species on the farm was obtained from
150 literature (Chen, 2000; Vassallo et al., 2006; Magill et al., 2006; Piedecausa et al., 2009;
151 Cromey et al., 2012; Brigolin et al., 2014; Ballester-Moltó et al., 2017).

152 Three cylindrical sea cucumber cages (1 m x 0.2 m ($d \times h$)) made of 0.8 cm galvanised mesh
153 wiring and a synthetic rope mesh bottom were set at 8 m depth directly below a commercial
154 fish cage at 0 m (E0), another three cages at 10 m (E10) and then at 25 m (E25) from the fish
155 cage. The same cage setup was used at the reference sites, R1 and R2 (Figure 1B). At each
156 site, sea cucumber cages were spaced out evenly every 2 m, weighted at either side of each
157 cage and moored to the seafloor in parallel to the fish cages.

158

159 **2.3. Sea cucumbers**

160 Juvenile *H. poli* specimens were collected in September 2018 by SCUBA diving Palermo,
161 Sicily and shipped to a land-based facility in Malta. Sea cucumbers were acclimated in 500 L
162 tanks that were supplied with flow-through ambient water from the nearshore study site. The
163 juveniles were fed an artificial microalgal diet (Algamac Protein Plus, Pacific Trading, Ireland)
164 for two weeks prior to the start of the experiment. Faeces and accumulated uneaten feed were
165 removed every two days, and physicochemical parameters of water quality in the tanks were
166 assessed daily. No evisceration or mortalities were recorded during the acclimation period.
167 At the end of this period, specimens that showed no evident signs of disease and were
168 of similar initial mean weight (\pm standard deviation, SD) (24.6 ± 2.1 g) were selected.

169 The field trials started in October 2018 and ran until September 2019. 150 sea cucumbers
170 were selected for the experiment and each cage randomly stocked with 10 sea cucumber
171 specimens with an initial mean stocking biomass of $313 \pm 6.6 \text{ g m}^{-2}$. The initial coefficient of
172 variation (CV) for sea cucumber weight was <12% and without significant differences ($p=$
173 0.183) between sites.

174

175 **2.4. Sea cucumber survival and growth**

176 Every two months, SCUBA divers retrieved all the sea cucumbers from their cages to assess
177 survival and growth performance. Missing sea cucumber individuals were considered as
178 mortalities and deducted. In addition, apparent diseased sea cucumbers present in each cage
179 were removed and considered dead. Any water, sediment, and detritus on the sea cucumbers'
180 integument was removed and individuals were weighed to the nearest $\pm 0.1 \text{ g}$ at 30 s of
181 removal from seawater to allow sea cucumbers to drain. After weighing, the surviving sea
182 cucumbers were redeployed to their respective cage.

183 The mean relative weight gain (RWG), growth rate (GR), specific growth rate (SGR) and
184 survival rate of *H. polii* for each experimental cage were determined according to Equations 1
185 to 4 respectively.

$$186 \text{ RWG (\%)} = 100 \times (W_2 - W_1) / W_1 \quad \text{[Equation 1]}$$

$$187 \text{ GR (g day}^{-1}\text{)} = W_2 - W_1 / t \quad \text{[Equation 2]}$$

$$188 \text{ SGR (\% day}^{-1}\text{)} = 100 \times (\ln W_2 - \ln W_1) / t \quad \text{[Equation 3]}$$

$$189 \text{ Survival rate (\%)} = 100 \times (n_2 / n_1) \quad \text{[Equation 4]}$$

190 where W_2 and W_1 are final and initial mean wet weight (g); t is culture duration (days); and n_2
191 and n_1 are final and initial number of *H. polii* individuals in each cage.

192

193 **2.5. Environmental parameters**

194 Measurements of water quality were recorded at each experimental site. Temperature (°C),
195 dissolved oxygen (DO; mg L⁻¹), and pH were measured on site from near-bottom water
196 samples collected in Niskin bottles and measured by an HQD Intellical meter (HQ30d; HACH,
197 US), over 12 months between October 2018 and September 2019. Duplicate 2 L water
198 samples were collected and transferred to the laboratory in a cool box for the quantitative
199 analysis of nutrients and total suspended solids (TSS). These water quality parameters were
200 assessed monthly from the fourth month of the study (February 2019) when suitable
201 equipment and method detection limits were applied. Samples for the analysis of N-NH₄⁺ were
202 preserved with sulphuric acid. The parameters and methods of analyses, together with their
203 limits of detection (LOD), are presented in Table 1.

204 Seafloor sediments were collected in triplicates using sediment cores (5 cm diameter) at the
205 start of the experiment in October 2018, then in February, May and at the end of the study, in
206 September 2019, from each individual sea cucumber cage site. The top 3 cm of sediment
207 samples were sliced, extracted and rinsed with distilled water. Dried samples were ground
208 and homogenised prior to the analysis of total organic carbon (TOC) and total nitrogen (TN).
209 Sub-samples were weighed in tin capsules and then analysed using a FlashSmart NC ORG
210 elemental analyser. TOC was determined by deduction after ashing samples at 600°C for 12h,
211 and analysing total inorganic carbon. TOC and TN contents were calculated by comparison to
212 standard samples. Elemental C: N ratios reported as weight ratios and expressed as mg mg⁻¹.
213

214

215 **2.6. Data analyses**

216 Statistical analysis was performed using SPSS v26.0 for Windows (SPSS Inc., Chicago, USA).
217 Shapiro-Wilk's test was used to assess normality of variables whereas homogeneity of
218 variances was determined using Levene's test. A significance level of 0.05 was assumed.
219 Environmental parameters were assessed using a General Linear Model (GLM) (*site x time*)
220 followed by pairwise comparisons with Bonferroni adjusted significance levels.

221 Survival and growth parameter data were analysed using a GLM (*site x time*) with pairwise
222 comparisons with Bonferroni correction. Differences between sites at the same sampling time
223 were assessed using one-way ANOVA followed by Tukey's *post hoc* test. A generalised linear
224 model was used to assess data that violated the assumption of normality. Data on growth
225 rates were represented by the average value for each cage for the different experimental sites.
226 Zero values for growth parameter data were omitted from the analysis.

227

228 **3. Results**

229 **3.1. Hydrography and waste dispersion**

230 The hydrography collected from the two sites near the fish farm showed average near-seabed
231 flows of 0.091 m s^{-1} in May and 0.149 m s^{-1} in June 2018, with slow residual current flows and
232 a south westerly to westerly direction during these periods.

233 The dispersion of particulate waste from the fish cages was highest directly below the fish
234 cage, $74.3 \text{ gC m}^{-2} \text{ day}^{-1}$ in May and $23.3 \text{ gC m}^{-2} \text{ day}^{-1}$ in June (Figure 2). The predictions of
235 sedimentation show that the deposition of organic carbon was local to the fish cage area with
236 flux decreasing with increasing distance from the edge of the fish cage. Model predictions
237 showed similar estimated values for organic carbon at E10 in May ($5.6 \text{ gC m}^{-2} \text{ day}^{-1}$) and June
238 ($5.1 \text{ gC m}^{-2} \text{ day}^{-1}$). The model shows that sea cucumbers were placed in an area of high

239 organic waste deposition of at E0, whereas low amounts of organic carbon reached the
240 experimental site at 25 m (E25) (May: $0.02 \text{ gC m}^{-2} \text{ day}^{-1}$; June: $0.4 \text{ gC m}^{-2} \text{ day}^{-1}$).

241

242 **3.2. Environmental parameters**

243 Throughout the trial period, temperature ranged between $14.9 \pm 0.1 \text{ }^\circ\text{C}$ and $28.3 \pm 0.1 \text{ }^\circ\text{C}$ with
244 similar readings recorded across sites ($p= 0.186$) (Figure 3A). The lowest water temperature
245 was recorded in February, and then increased steadily to reach peak readings in August. DO
246 levels varied significantly over time ($p < 0.001$) in the range between $6.3 \pm 0.3 \text{ mg L}^{-1}$ and 10.5
247 $\pm 0.1 \text{ mg L}^{-1}$ (Figure 3B). The lowest readings were recorded in proximity to the fish cages (E0
248 and E10) whereas the highest values were recorded at the reference sites ($p < 0.001$). DO
249 levels were always above 5 mg L^{-1} . The water pH was consistent until March (8.18 ± 0.06 to
250 8.32 ± 0.01), and then levels decreased to reach the lowest recorded values (7.90 ± 0.03) at
251 E0 in June (Figure 3C).

252 TSS and nutrients levels varied significantly across sampling sites ($p < 0.05$), with the
253 exception of ammonia ($p= 0.186$). Levels of ammonia changed significantly over time ($p <$
254 0.001), particularly apparent were the peak level recorded in August ($p < 0.05$) (Figure 4A).
255 Similarly, peak nitrate levels were recorded towards the end of summer, notably at E0 ($2.89 \pm$
256 $0.92 \text{ } \mu\text{mol L}^{-1}$) (Figure 4B). The nitrite levels were consistently below $0.05 \text{ } \mu\text{mol/L}$ and similar
257 across all sites (Figure 4C); however, concentrations increased significantly in April and
258 September at these sites ($p < 0.05$). TP levels dropped rapidly after February with significant
259 differences across most sampling periods ($p < 0.05$) (Figure 4D). TSS levels increased to a
260 peak concentration in late spring ($33.38 \pm 0.35 \text{ mg L}^{-1}$). Pairwise comparisons revealed
261 marked variation in TSS levels across most sampling periods ($p < 0.05$).

262 Differences in nitrate concentration were significant between E0 and the sites close to the fish
263 cage, E10 and E25, and the reference sites, R1 and R2 ($p < 0.05$). On the other hand, marked

264 differences in nitrite levels were only recorded between sites E0 and R1, and R1 and R2 ($p <$
265 0.05). TSS levels under the fish cage (E0) were significantly higher than those recorded at
266 E10 and R1 ($p <$ 0.05).

267 The content of TN, TOC and C/N in surface sediments varied significantly between the
268 different sites and over time ($p <$ 0.05), except TN levels between the different sampling periods
269 ($p =$ 0.437). Sediments near the fish cages were generally more enriched in TN content than
270 at the reference sites, with distinct spatial patterns (Figure 5A). TOC content in surface
271 sediments did not show consistent spatial patterns between sites near fish cages and those
272 at the reference location during the study (Figure 5B). Measured sedimentary organic carbon
273 levels were lowest at all the sampled sites in May ($p <$ 0.001), with the weight ratios of C/N
274 showing similar temporal trends ($p <$ 0.001). The C/N ratios in sediments were significantly
275 lower near fish cages in October (Figure 5C).

276

277 **3.3. Survival and growth**

278 Within the first month of the study, all experimental cages on the seafloor directly below the
279 fish cage (E0) were completely smothered with sediment consequently leading to mass
280 mortality of the sea cucumbers (Figure 6). At the other IMTA and reference sites, survival rates
281 were relatively high until March, followed by a marked drop across all groups by May. Episodic
282 storm events between March and May disturbed the sea cucumber cage setup and contributed
283 to escapees and mortalities. At R1, all sea cucumbers were either missing or dead by
284 September. The survival rates remained stable in the remaining groups until the end of the
285 study. As a result of loss or mortality, the final survival rates at E10 and E25 were 23 % and
286 33 % respectively, similar to that of *H. poli* at R2 which was 27 % ($p =$ 0.706).

287 The final weight of *H. poli* juveniles at E10 ranged between 38.5 g and 61.0 g (mean \pm SD,
288 47.0 ± 7.0 g, $n= 7$), whereas that at E25 was between 42.5 g and 58.5 g (mean \pm SD, $48.6 \pm$
289 5.0 g, $n= 10$). The final weight range of *H. poli* at R2 was between 11.4 g and 36 g with a mean
290 of 20.5 ± 8.0 g ($n= 8$) (Figure 7). Juvenile *H. poli* cultured at E10 and E25 showed an overall
291 positive RWG with the greatest increase being the approximate two-fold increase at E25 over
292 the culture period (Figure 6), though not statistically different from that of *H. poli* at E10 (87%).
293 On the other hand, *H. poli* at R2 had suffered a loss in biomass by the end of the experiment
294 (-12 %). The RWG differed significantly between sites ($p= 0.008$) with biomass gains in
295 juvenile *H. poli* at E10 and E25 being significantly higher than those at R2.

296 The SGR of *H. poli* at sites E10 and E25 was positive over the whole study period (E10= 0.18
297 ± 0.02 % day⁻¹; E25= 0.20 ± 0.01 % day⁻¹) whereas that at R2, was negative (-0.04 ± 0.07 %
298 day⁻¹). The most marked differences in growth rates were between E25 and R2 ($p= 0.037$)
299 (Figure 8). The growth rates were influenced by site during the study with multiple comparisons
300 showing differences in SGR of *H. poli* between R1 and the IMTA sites, E10 and E25 ($p<$
301 0.001). Differences in growth rates were recorded with peak growth at E25 in July (SGR= 0.64
302 % day⁻¹; GR= 0.24 ± 0.05 g day⁻¹) and E10 in November (SGR= $0.58 \pm 0.1\%$ day⁻¹; GR= 0.20
303 ± 0.01 g day⁻¹). The SGR of *H. poli* dropped significantly by March with little to no growth
304 reported at the IMTA sites and negative growth rates at the references sites in the same period
305 ($p< 0.05$), though not necessarily correlated with the temporal variability in the water quality
306 parameters. The SGR of *H. poli* increased again towards the end of the experiment ($p> 0.05$).

307

308 **4. Discussion**

309 This work aimed to assess the survival and growth of *H. poli* on seafloor sediment that receives
310 organic waste from uneaten fish feed and faecal pellets. Findings show that with proper siting

311 the deposit-feeding *H. poli* can survive and grow better on seafloor sediment near commercial
312 fish farms compared to the natural environment.

313 The mass mortalities reported for sea cucumbers directly below the fish cage indicate
314 unfavourable conditions for bottom culture of *H. poli*. The lower DO levels recorded under the
315 fish cage may be attributed to a higher flux and accumulation of organic matter, but they were
316 not at levels considered lethal in other species. Similar events of mass mortality were reported
317 for *Holothuria leucospilota* cultured directly below the fish cage when DO levels were $<2.5 \text{ mg}$
318 L^{-1} but survived when DO levels were above 3.2 mg L^{-1} (Yu et al., 2012). In this study, the
319 concentrations of DO in near-bottom water were consistently above 5 mg L^{-1} , similar to
320 conditions maintained in the laboratory culture of *H. poli* (Tolon, 2017). This sea cucumber
321 species has been reported to survive and grow in laboratory conditions (Tolon, 2017) at similar
322 water temperature experienced during the mass mortality at E0. Moreover, sea cucumbers
323 were able to grow in similar temperature conditions at the other IMTA and references sites
324 therefore this is not expected to have contributed to the mass mortality at E0. Other water
325 quality parameters measured would not be expected to bring about this level of mortality,
326 which implies that the mortalities could be attributed to the conditions that prevailed in seafloor
327 sediment below the fish cage and possibly farming activity that was only relevant to this area.
328 Conversely, the species may have a high natural mortality in the wild but there is little
329 information on this at present. Further work is therefore needed to investigate this mortality
330 and to understand how this will effect commercial sea cucumber IMTA.

331 The particulate depositional modelling conducted prior to the present study showed that the
332 estimated deposition of organic carbon was highest directly below the sea bream cage, at
333 2302.3 gC m^{-2} in May and 721.4 gC m^{-2} in June before *H. poli* juveniles were deployed under
334 the fish farm. Several studies have reported excess sedimentation of organic matter below the
335 fish cage that decreased with distance away from the cage (Pérez, et al. 2002; Sarà et al.,

336 2004; Corner et al., 2006; Holmer et al., 2007). Findings suggest that the benthic community
337 structure is affected when carbon flux ($> 1 - 2 \text{ gC m}^{-2} \text{ day}^{-1}$) exceed carbon loading tolerances
338 (Holmer et al., 2005; Chamberlain and Stucchi, 2007). Based on these deductions, the
339 modelled deposition of organic carbon in May and June may suggest changes to benthic
340 conditions, at least during this period. These conditions would be expected to have effects on
341 benthic sediment quality, among which elevated sediment oxygen demand (Wu, 1995; Holmer
342 et al., 2005). The predicted load and accumulation of organic matter over a short period may
343 be cause for the mass mortalities recorded below the fish cage. This suggests that integrating
344 sea cucumber experimental sites within commercial monoculture requires consideration for
345 suitable culture methods, appropriate setup design and siting considerations for IMTA
346 systems.

347 The predicted levels of sedimentation decreased rapidly within a short distance from the fish
348 cage. This gradient suggests that benthic enrichment may be localised at the studied farm
349 site. The accumulation of organic particulates in surface sediments near the fish cages can
350 be associated with the settlement of fish waste products and uneaten feed pellets (Sarà et al.,
351 2004; Cromey et al., 2012). Waste from fish farms can be an additional organic-rich source
352 that releases particulate nitrogen and carbon in varying proportions. The low C/N values near
353 fish cages, particularly in October, follow trends of lower C/N ratios under sea bream and sea
354 bass net cages in other Mediterranean countries (Holmer et al., 2007). In this study, nitrogen
355 enrichment in sediments near fish cages and TN values that declined away from the farm also
356 corroborates findings from isotopic studies in similar environments (Sarà et al., 2004; Holmer
357 et al, 2007). The lack of consistent spatial patterns in sedimentary organic carbon content and
358 lower than predicted values may be attributed to farm and site-specific variables like
359 sedimentary metabolic processes that would require further research.

360 The growth performance of *H. poli* at E10 and E25, relative to that at E0 and the reference
361 sites, indicates that the quantities and quality of organic content in seafloor sediment at these
362 sites were suitable for sea cucumbers. Nevertheless, the reported escapees and low survival
363 rates across all sites when compared to other field studies (Yokoyama, 2013; Yu et al., 2014a,
364 Neofitou et al., 2019) suggest other critical factors may need to be considered for open-water
365 culture of juvenile *H. poli*. In addition to the impact of severe weather events, the survival and
366 growth of *H. poli* may have been influenced by the initial stocking density. The stocking density
367 for juvenile *H. poli* in this experiment was higher than that (10 individuals m⁻²) recommended
368 by Neofitou et al. (2019) for *H. tubulosa*. The total stocking biomass used in this experiment
369 (313 g m⁻²) of *H. poli* was higher than that used in the laboratory culture of *H. poli* (270 g m⁻²)
370 by Tolon (2017) and that proposed for long-term culture of *H. tubulosa* (6 individuals m⁻², 253
371 g m⁻²) (Tolon et al., 2017a) where no mortalities were recorded. Studies have reported survival
372 rates up to 100% and higher growth rates for *A. japonicus* when cultured at low densities in
373 similar studies (Yokoyama, 2013; Yu et al., 2014a). Conversely, survival rates in *H. tubulosa*
374 showed a significant drop during a 30-day field trial at higher culture density (ca. 3300 g m⁻²)
375 (Neofitou et al., 2019) than that used in the present study. Competition is expected to have
376 contributed to the missing *H. poli* individuals and consequentially, the low survival rates. This
377 may be affirmed by the absence of individuals and escape attempts from experimental cages,
378 in response to competition for space and food. This further demonstrates the need to use
379 appropriate setup design for the bottom-culture of this deposit-feeding sea cucumber. While
380 no published information is available on the local natural population densities of *H. poli*, the
381 survival and growth performance of *H. poli* would be expected to improve at lower stocking
382 densities.

383 Quantitative data on the growth performance of *H. poli* in the wild environment is limited and
384 extensive trends of growth are unknown. The RWG of *H. poli* juveniles at E10 and E25

385 suggests a suitable food source for sea cucumbers, corroborating findings that deposit-
386 feeders grow better in organic-rich sediments (Nelson et al., 2012; Yu et al., 2012; Hannah et
387 al., 2013; MacDonald et al., 2013; Yokoyama, 2013; Yu et al., 2014a, b). These findings are
388 consistent with other open-water studies that have demonstrated the ability of sea cucumbers
389 to grow better in proximity to fish cages rather than at reference sites (Yokoyama, 2013; Yu et
390 al., 2014a, b, Tolon et al., 2017b; Grosso et al., 2021). Over 8 months, Yokoyama (2013)
391 reported up to a 421-fold weight increase in *A. japonicus* of initial mean weight (\pm SD), 0.12
392 \pm 0.10 g, when deposition was between 0.11 gC m⁻² day⁻¹ and 2.17 gC m⁻² day⁻¹. The RWG of
393 *H. poli* near the fish cages in the present study is comparable to that of *A. japonicus* juveniles
394 in Yu et al. (2014a).

395 During a 3-month study by Tolon et al. (2017b), *H. tubulosa* grew an average of 0.32 % day⁻¹
396 below commercial cages in sediments enriched in organic carbon content (4.68 - 4.84 %) and
397 without record of mass mortalities. The average growth rate of *H. tubulosa* decreased (0.22
398 % day⁻¹) at 70 m from the farm in sediments that were less influenced by organic carbon flux
399 (3.64 - 4.2 %) (Tolon et al., 2017b). Over 12 months, the growth rates of *H. poli* close to the
400 fish cages (0.18 – 0.2 % day⁻¹) were lower than the rates achieved by *H. tubulosa*.
401 Nonetheless, peak growth rates of *H. poli* observed in this trial in November and July were
402 higher than that reported by Tolon et al. (2017b) and comparable to those of *A. japonicus* in
403 similar studies (Yu et al., 2014a). The SGR of *H. poli* at E10 and E25 increased until January
404 but then decreased by March. This compares well with the growth trends of *A. japonicus* in
405 open-water IMTA (Yokoyama, 2013; Yu et al., 2014a).

406 In a land-based setup, the average SGR of *H. poli* was 0.03 % day⁻¹ at 15°C and 0.87 % day⁻¹
407 at 25 °C with juveniles able to survive and maintain weight through the winter (Tolon, 2017).
408 In the present study, growth performance in *H. poli* generally decreased and subsequently
409 stagnated to maintain weight as water temperatures approached 15 °C. While optimal water

410 temperatures are species-specific, the seasonal fluctuations in growth performance of *H. poli*
411 agree with conclusions of higher growth in the warmer months, and marginal or lack of growth
412 for *H. tubulosa* and *A. japonicus* as water temperatures dropped to sub-optimal temperatures
413 (Yokoyama, 2013; Günay et al., 2015; Tolon, 2017).

414

415 **Conclusions**

416 This 12-month field study showed that *H. poli* was able to grow better in locations near a
417 commercial fish farm rather than at the reference sites, suggesting that sea cucumbers may
418 have utilised nutrients from the waste released from the fish farm. Further research is needed
419 to establish connectivity and to show a trophic link between the fish farm and the sea
420 cucumbers using biochemical tracers such as stable isotopes, and then assess the potential
421 to reduce organic waste from the fish cages.

422 In this study, the sea cucumbers directly below the commercial fish cage were smothered by
423 nutrient input in an event of mass mortality. This revealed that the rates of sedimentation and
424 the organic load in sediment at this site were not suited for the bottom culture of *H. poli* at
425 these densities. This study suggests that site layout in IMTA must consider how waste is
426 dispersed from the fish cage.

427 Despite the biomass increase, high and comparable mortality rates across IMTA and
428 reference sites reveal the need for improved culture conditions. The feasibility of using *H. poli*
429 in open-water IMTA would primarily depend on better survival rates, possibly addressed
430 through optimal stocking densities and with setup design consideration. This would also
431 depend on a better understanding of the physiological and metabolic requirements of *H. poli*
432 at different growth stages and environmental conditions.

433

434 **Acknowledgements**

435 This work was supported by the Tools for Assessment and Planning of Aquaculture
436 Sustainability (TAPAS) project which has received funding from the EU H2020 research and
437 innovation programme under Grant Agreement No 678396. The research work disclosed in
438 this publication is partially funded by the ENDEAVOUR Scholarships Scheme. Our gratitude
439 is to personnel at the Department of Fisheries and Aquaculture, notably Mr. Robert Gatt and
440 Mr. Giuseppe Panarello, and AquaBioTech Group, for their support in the field and sample
441 processing and analysis in the laboratory. We appreciate the support provided by the owners
442 and staff of the fish farm, especially Mr. Saviour Ellul and Mr. Giovanni Ellul.

443

444 **References**

445 Baltadakis, A., Casserly, J., Falconer, L., Sprague, M., & Telfer, T. C. (2020). European
446 lobsters utilise Atlantic salmon wastes in coastal integrated multi-trophic aquaculture
447 systems. *Aquaculture Environment Interactions*, 12, 485-494.

448 Ballester-Moltó, M., Follana-Berná, G., Sanchez-Jerez, P., & Aguado-Giménez, F. (2017).
449 Total nitrogen, carbon and phosphorus digestibility in gilthead seabream (*Sparus aurata*)
450 and European seabass (*Dicentrarchus labrax*) fed with conventional and organic
451 commercial feeds: Implications for particulate waste production. *Aquaculture Research*,
452 48(7), 3450-3463.

453 Barrington, K., Chopin, T., & Robinson, S., 2009. Integrated multi-trophic aquaculture (IMTA)
454 in marine temperate waters. In D. Soto (Ed.), *Integrated mariculture: A global review* (FAO
455 Fisheries and Aquaculture Technical Paper. No. 529 ed., pp. 7-46). Rome: FAO.

456 Belbachir, N., Mezali, K., & Soualili, D. L. (2014). Selective feeding behaviour in some
457 aspidochirotid holothurians (Echinodermata: Holothuroidea) at Stidia, Mostaganem

458 Province, Algeria. *Secretariat of the Pacific Community Beche-De-Mer Information*
459 *Bulletin*, 34(34), 37.

460 Brigolin, D., Meccia, V. L., Venier, C., Tomassetti, P., Porrello, S., & Pastres, R. (2014).
461 Modelling biogeochemical fluxes across a Mediterranean fish cage farm. *Aquaculture*
462 *Environment Interactions*, 5, 71-88.

463 Chamberlain, J., & Stucchi, D. (2007). Simulating the effects of parameter uncertainty on
464 waste model predictions of marine finfish aquaculture. *Aquaculture*, 272(1-4), 296-311.

465 Chen, Y. S. 2000 Waste outputs and dispersion around marine fish cages and the implications
466 for modelling. Ph.D. Thesis. University of Stirling, 185 pp.

467 Cheshuk, B. W., Purser, G. J., & Quintana, R. (2003). Integrated open-water mussel (*Mytilus*
468 *planulatus*) and Atlantic salmon (*Salmo salar*) culture in tasmania, australia. *Aquaculture*,
469 218(1-4), 357-378.

470 Chopin, T., Cooper, J. A., Reid, G., Cross, S., & Moore, C. (2012). Open-water integrated
471 multi-trophic aquaculture: Environmental biomitigation and economic diversification of fed
472 aquaculture by extractive aquaculture. *Reviews in Aquaculture*, 4(4), 209-220.

473 Coulon, P., & Jangoux, M. (1993). Feeding rate and sediment reworking by the holothuroid
474 *Holothuria tubulosa* (Echinodermata) in a Mediterranean seagrass bed off Ischia Island,
475 Italy. *Marine Ecology Progress Series*, 92, 201-204.

476 Cromey, C. J., Thetmeyer, H., Lampadariou, N., Black, K. D., Kögeler, J., & Karakassis, I.
477 (2012). MERAMOD: Predicting the deposition and benthic impact of aquaculture in the
478 eastern Mediterranean Sea. *Aquaculture Environment Interactions*, 2(2), 157-176.

479 Corner, R. A., Brooker, A. J., Telfer, T. C., & Ross, L. G. (2006). A fully integrated GIS-based
480 model of particulate waste distribution from marine fish-cage sites. *Aquaculture*, 258, 299-
481 311.

482 Cubillo, A. M., Ferreira, J. G., Robinson, S. M. C., Pearce, C. M., Corner, R. A., & Johansen,
483 J. (2016). Role of deposit feeders in integrated multi-trophic aquaculture — A model
484 analysis. *Aquaculture*, 453, 54-66.

485 Eikema, B.J.O. & van den Boomgaard, M.J.G. (2007). Wave penetration and current study
486 Marsaxlokk Bay, Malta BE/07002/1418 - Upgrading of quays and vessel manoeuvring
487 area at Malta Freeport Kalafrana PA03368/06 - Environmental Impact Statement. Report
488 commissioned for Malta Freeport Terminals Ltd. Malta.

489 Francour, P. (1989). Repartition and abundance of holothurians (*Holothuria polii* and *H.*
490 *tubulosa*) from a *Posidonia oceanica* bed of Port Cros (Var, France). In C. F.
491 Boudouresque, A. Meinesz, E. Fresi & V. Gravez (Eds.), *Second international workshop*
492 *on Posidonia oceanica beds* (2nd ed., pp. 1-16). France: GIS Posidonie publ.

493 Giangrande, A., Pierri, C., Arduini, D., Borghese, J., Licciano, M., Trani, R., et al. (2020). An
494 innovative IMTA system: Polychaetes, sponges and macroalgae co-cultured in a
495 southern Italian in-shore mariculture plant (Ionian Sea). *Journal of Marine Science and*
496 *Engineering*, 8(10), 733.

497 González-Wangüemert, M., Domínguez-Godino, J. A., & Cánovas, F. (2018). The fast
498 development of sea cucumber fisheries in the Mediterranean and NE Atlantic waters:
499 From a new marine resource to its over-exploitation. *Ocean & Coastal Management*, 151,
500 165-177.

501 Grosso, L., Rakaj, A., Fianchini, A., Morroni, L., Cataudella, S., & Scardi, M. (2021). Integrated
502 multi-trophic aquaculture (IMTA) system combining the sea urchin *Paracentrotus lividus*,
503 as primary species, and the sea cucumber *Holothuria tubulosa* as extractive species.
504 *Aquaculture*, 534: 736268.

505 Günay, D., Emiroglu, D., Tolon, T., Ozden, O., & Saygi, H. (2015). Growth and survival rate of
506 juvenile sea cucumbers (*Holothuria tubulosa*, Gmelin, 1788) at various temperatures.
507 *Turkish Journal of Fisheries Aquatic Sciences*, 15, 533-541.

508 Handâ, A., Min, H., Wang, X., Broch, O. J., Reitan, K. I., Reinertsen, H., et al. (2012).
509 Incorporation of fish feed and growth of blue mussels (*Mytilus edulis*) in close proximity
510 to salmon (*Salmo salar*) aquaculture: Implications for integrated multi-trophic aquaculture
511 in Norwegian coastal waters. *Aquaculture*, 356-357, 328-341.

512 Hannah, L., Pearce, C. M., & Cross, S. F. (2013). Growth and survival of California sea
513 cucumbers (*Parastichopus californicus*) cultivated with sablefish (*Anoplopoma fimbria*) at
514 an integrated multi-trophic aquaculture site. *Aquaculture*, 406-407, 34-42.

515 Harmelin, J. G., Bouchon, C., & Hong, J. S. (1981). Impact de la pollution sur la distribution
516 des échinodermes des substrats durs en Provence (Méditerranée Nord-occidentale).
517 *Téthys*, 10, 13-36.

518 Holmer, M., Marba, N., Diaz-Almela, E., Duarte, C. M., Tsapakis, M., & Danovaro, R. (2007).
519 Sedimentation of organic matter from fish farms in oligotrophic Mediterranean assessed
520 through bulk and stable isotope ($\delta^{13}\text{C}$ and $\delta^{15}\text{N}$) analyses. *Aquaculture*, 262(2-4), 268-
521 280.

- 522 Holmer, M., Wildish, D., & Hargrave, B. (2005). Organic enrichment from marine finfish
523 aquaculture and effects on sediment biogeochemical processes. In B. T. Hargrave (Ed.),
524 *Environmental effects of marine finfish aquaculture. Handbook of environmental*
525 *chemistry* (5th ed., pp. 181-206). Berlin, Heidelberg: Springer.
- 526 Irisarri, J., Cubillo, A., Fernández-Reiriz, M. J., & Labarta, U. (2013). Growth variations within
527 a farm of mussel (*Mytilus galloprovincialis*) held near fish cages: Importance for the
528 implementation of integrated aquaculture. *Aquaculture Research*, 46(8), 1988-2002.
- 529 Irisarri, J., Fernández-Reiriz, M. J., Labarta, U., Cranford, P. J., & Robinson, S. M. C. (2014).
530 Availability and utilization of waste fish feed by mussels *Mytilus edulis* in a commercial
531 integrated multi-trophic aquaculture (IMTA) system: A multi-indicator assessment
532 approach. *Ecological Indicators*, 48, 673-686.
- 533 Jiang, Z., Wang, G., Fang, J., & Mao, Y. (2013). Growth and food sources of Pacific oyster
534 *Crassostrea gigas* integrated culture with Sea bass *Lateolabrax japonicus* in Ailian Bay,
535 China. *Aquaculture International*, 21, 45-52.
- 536 Kalantzi, I., & Karakassis, I. (2006). Benthic impacts of fish farming: Meta-analysis of
537 community and geochemical data. *Marine Pollution Bulletin*, 52, 484-493.
- 538 Karakassis, I., Tsapakis, M., Hatziyanni, E., Papadopoulou, K. -, & Plaiti, W. (2000). Impact
539 of cage farming of fish on the seabed in three Mediterranean coastal areas. *ICES Journal*
540 *of Marine Science*, 57: 1462–1471. 2000, 57, 1462-1471.
- 541 Kazanidis, G., Antoniadou, C., Lolas, A. P., Neofitou, N., Vafidis, D., Chintiroglou, C., et al.
542 (2010). Population dynamics and reproduction of *Holothuria tubulosa* (Holothuroidea:

543 Echinodermata) in the Aegean Sea. *Journal of the Marine Biological Association of the*
544 *United Kingdom*, 90(5), 895-901.

545 Lee, S., Ford, A. K., Mangubhai, S., Wild, C., & Ferse, S. C. A. (2018). Effects of sandfish
546 (*Holothuria scabra*) removal on shallow-water sediments in Fiji. *PeerJ*, 6:e4773

547 MacDonald, C. L. E., Stead, S., & Slater, M. J. (2013). Consumption and remediation of
548 European seabass (*Dicentrarchus labrax*) waste by the sea cucumber *Holothuria forskali*.
549 *Aquaculture International*, 21(6), 1279-1290.

550 Magill, S. H., Thetmeyer, H., & Cromey, C., J. (2006). Settling velocity of faecal pellets of
551 gilthead sea bream (*Sparus aurata* L.) and sea bass (*Dicentrarchus labrax* L.) and
552 sensitivity analysis using measured data in a deposition model. *Aquaculture*, 251, 295-
553 305.

554 Mazzola, A., Mirto, S., La Rosa, T., Fabiano, M., & Danovaro, R. (2000). Fish-farming effects
555 on benthic community structure in coastal sediments: Analysis of meiofaunal recovery.
556 *ICES Journal of Marine Science*, 57, 1454-1461.

557 Mazzola, A., & Sarà, G. (2001). The effect of fish farming organic waste on food availability
558 for bivalve molluscs (Gaeta Gulf, Central Tyrrhenian, MED): Stable carbon isotopic
559 analysis. *Aquaculture*, 192(5), 361-379.

560 Mezali, K. (2008). Phylogénie, systématique, dynamique des populations et nutrition de
561 quelques espèces d'holothuries aspidochirotes (Holothuroidea: Echinodermata)
562 inféodées aux herbiers de posidonies de la côte Algéroise. (Doctoral dissertation,
563 USTHB, Algiers, Algeria).

564 Mezali, K., & Soualili, D. L. (2013). The ability of holothurians to select sediment particles and
565 organic matter. *Secretariat of the Pacific Community Beche-De- Mer Information Bulletin*,
566 (33), 38-43.

567 Neofitou, N., Lolas, A., Ballios, I., Skordas, K., Tziantziou, L., & Vafidis, D. (2019). Contribution
568 of sea cucumber *Holothuria tubulosa* on organic load reduction from fish farming
569 operation. *Aquaculture*, 501, 97-103.

570 Nelson, E. J., MacDonald, C. L. E., & Robinson, S. M. C. (2012). The absorption efficiency of
571 the suspension-feeding sea cucumber, *Cucumaria frondosa*, and its potential as an
572 extractive integrated multi-trophic aquaculture (IMTA) species. *Aquaculture International*,
573 370-371, 19-25.

574 Papageorgiou, N., Kalantzi, I., & Karakassis, I. (2010). Effects of fish farming on the biological
575 and geochemical properties of muddy and sandy sediments in the Mediterranean Sea.
576 *Marine Environmental Research*, 69(5), 326-336.

577 Pérez, O. M., Telfer, T. C., Beveridge, M. C. M., & Ross, L. G. (2002). Geographical
578 information systems (GIS) as a simple tool to aid modelling of particulate waste
579 distribution at marine fish cage sites. *Estuarine, Coastal and Shelf Science*, 54(4), 761-
580 768.

581 Piedecausa, M. A., Aguado-Giménez, F., García-García, B., Ballester, G., & Telfer, T. (2009).
582 Settling velocity and total ammonia nitrogen leaching from commercial feed and faecal
583 pellets of gilthead seabream (*Sparus aurata* L. 1758) and seabass (*Dicentrarchus labrax*
584 L.1758). *Aquaculture Research*, 40(15), 1703-1714.

- 585 Porello, S., Tomassetti, P., Manzueto, L., Finoia, M. G., Persia, E., Mercatali, I., et al. (2005).
586 The influence of marine cages on the sediment chemistry in the western Mediterranean
587 sea. *Aquaculture*, 249(1-4), 145-158.
- 588 Purcell, S. W. (2015). Value, market preferences and trade of beche-de-mer from pacific island
589 sea cucumbers. *PLoS ONE*, 9(4), e95075.
- 590 Rakaj, A., Fianchini, A., Boncagni, P., Scardi, M., & Cataudella, S. (2019). Artificial
591 reproduction of *Holothuria polii*: A new candidate for aquaculture. *Aquaculture*
592 *Environment Interactions*, 498, 444-453.
- 593 Ross, L.G., Telfer, T.C., Falconer, L., Soto, D. & Aguilar-Manjarrez, J., eds. 2013. Site
594 selection and carrying capacities for inland and coastal aquaculture. FAO/Institute of
595 Aquaculture, University of Stirling, Expert Workshop, 6–8 December 2010. Stirling, the
596 United Kingdom of Great Britain and Northern Ireland. FAO Fisheries and Aquaculture
597 Proceedings No. 21. Rome, FAO. 282 pp.
- 598 Sarà, G., Scilipoti, D., Mazzola, A., & Modica, A. (2004). Effects of fish farming waste to
599 sedimentary and particulate organic matter in a southern Mediterranean area (Gulf of
600 Castellammare, Sicily): A multiple stable isotope study ($\delta^{13}\text{C}$ and $\delta^{15}\text{N}$). *Aquaculture*,
601 234(1-4), 199-213.
- 602 Telfer, T. C., Baird, D. J., McHenry, J. G., Stone, J., Sutherland, I., & Wislocki, P. (2006).
603 Environmental effects of the anti-sea lice (Copepoda: Caligidae) therapeutant emamectin
604 benzoate under commercial use conditions in the marine environment. *Aquaculture*,
605 260(1-4), 163-180.

- 606 Tolon, T. (2017). Effect of salinity on growth and survival of the juvenile sea cucumbers
607 *Holothuria tubulosa* (Gmelin, 1788) and *Holothuria poli* (Delle Chiaje, 1923). *Fresenius*
608 *Environmental Bulletin*, 26(6), 3930-3935.
- 609 Tolon, M. T., Emiroğlu, D., Günay, D., & Hancı, B. (2017a). Effect of stocking density on growth
610 performance of juvenile sea cucumber *Holothuria tubulosa* (Gmelin, 1788). *Aquaculture*
611 *Research*, 48, 4124-4131.
- 612 Tolon, M. T., Emiroglu, D., Gunay, D., & Ozgul, A. (2017b). Sea cucumber (*Holothuria*
613 *tubulosa* Gmelin, 1790) culture under marine fish net cages for potential use in integrated
614 multi-trophic aquaculture (IMTA). *Indian Journal of Geo-Marine Sciences*, 46, 749-756.
- 615 Tomassetti, P., Gennaro, P., Lattanzi, L., Mercatali, I., Persia, E., Vani, D., et al. (2016).
616 Benthic community response to sediment organic enrichment by Mediterranean fish
617 farms: Case studies. *Aquaculture*, 40, 262-272.
- 618 Toral-Granda, V., Lovatelli, A., & Vasconcellos, M. (Eds.). (2008). *Sea cucumbers. A global*
619 *review of fisheries and trade* (FAO Fisheries and Aquaculture Technical Paper. No. 516.
620 ed.). Rome: FAO.
- 621 Troell, M., Joyce, A., Chopin, T., Neori, A., Buschmann, A. H., & Fang, J. (2009). Ecological
622 engineering in aquaculture — potential for integrated multi-trophic aquaculture (IMTA) in
623 marine offshore systems. *Aquaculture*, 297(1-4), 1-9.
- 624 Vassallo, P., Doglioli, A. M., & Beiso, I. (2006). Determination of physical behaviour of feed
625 pellets in Mediterranean water. *Aquaculture Research*, 37(2), 119-126.
- 626 Wu, R. S. S. (1995). The environmental impact of marine fish culture: Towards a sustainable
627 future. *Marine pollution bulletin*, 31(4-12), 159-166.

628 Yokoyama, H. (2013). Growth and food source of the sea cucumber *Apostichopus japonicus*
629 cultured below fish cages — potential for integrated multi-trophic aquaculture.
630 *Aquaculture*, 372-375, 28-38.

631 Yu, Z., Hu, C., Zhou, Y., Li, H., & Peng, P. (2012). Survival and growth of the sea cucumber
632 *Holothuria leucospilota* brandt: A comparison between suspended and bottom cultures in
633 a subtropical fish farm during summer. *Aquaculture Research*, 44(1), 114-124.

634 Yu, Z., Zhou, Y., Yang, H., Ma, Y., & Hu, C. (2014a). Survival, growth, food availability and
635 assimilation efficiency of the sea cucumber *Apostichopus japonicus* bottom-cultured
636 under a fish farm in southern China. *Aquaculture*, 426-427, 238-248.

637 Yu, Z., Zhou, Y., Yang, H., & Hu, C. (2014b). Bottom culture of the sea cucumber *Apostichopus*
638 *japonicus* Selenka (Echinodermata: Holothuroidea) in a fish farm, southern China.
639 *Aquaculture Research*, 45(9), 1434-1441.

640 Zamora, L. N., Yuan, X., Carton, A. G., & Slater, M. J. (2016). Role of deposit-feeding sea
641 cucumbers in integrated multitrophic aquaculture: Progress, problems, potential and
642 future challenges. *Reviews in Aquaculture*, 10(1), 1-16.

643

644

645

646

647

648

649

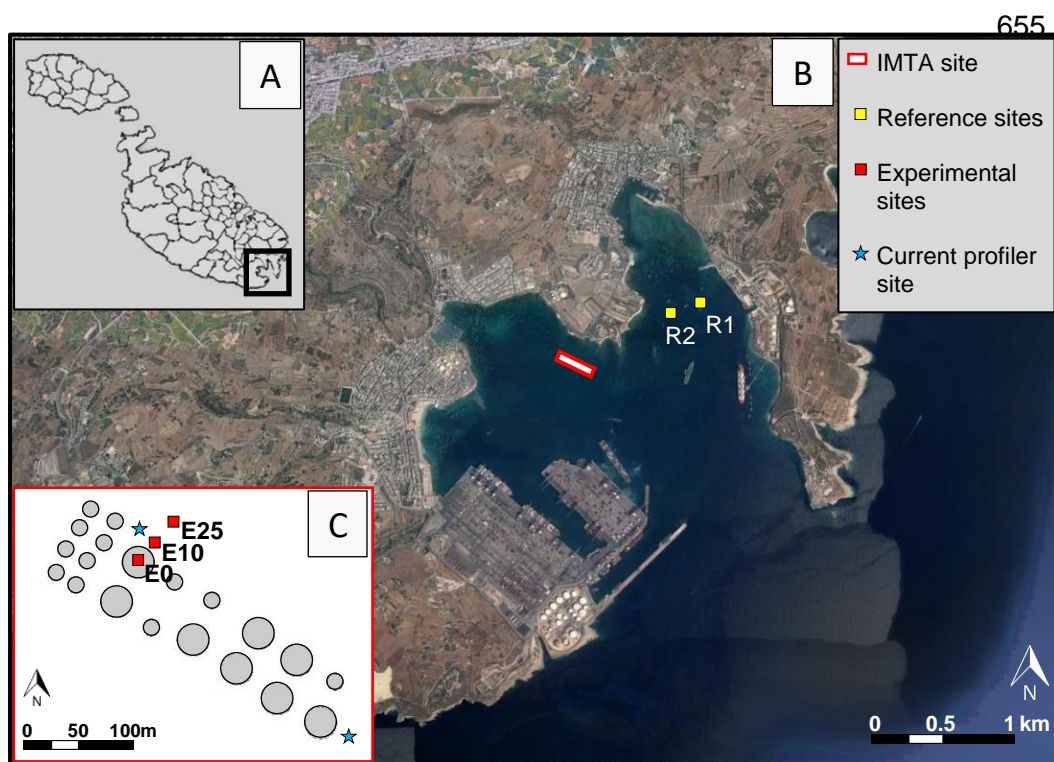
650

651

652

653

654



665 Figure 1A. Location of the test site within Marsaxlokk Port, southeast Malta. B. Zoomed
666 Google Earth image of location showing the IMTA and reference sites, R1 and R2. C. IMTA
667 site showing the sea cucumber cage positions at each experimental site and the deployment
668 locations of the current profiler.

669

670

671

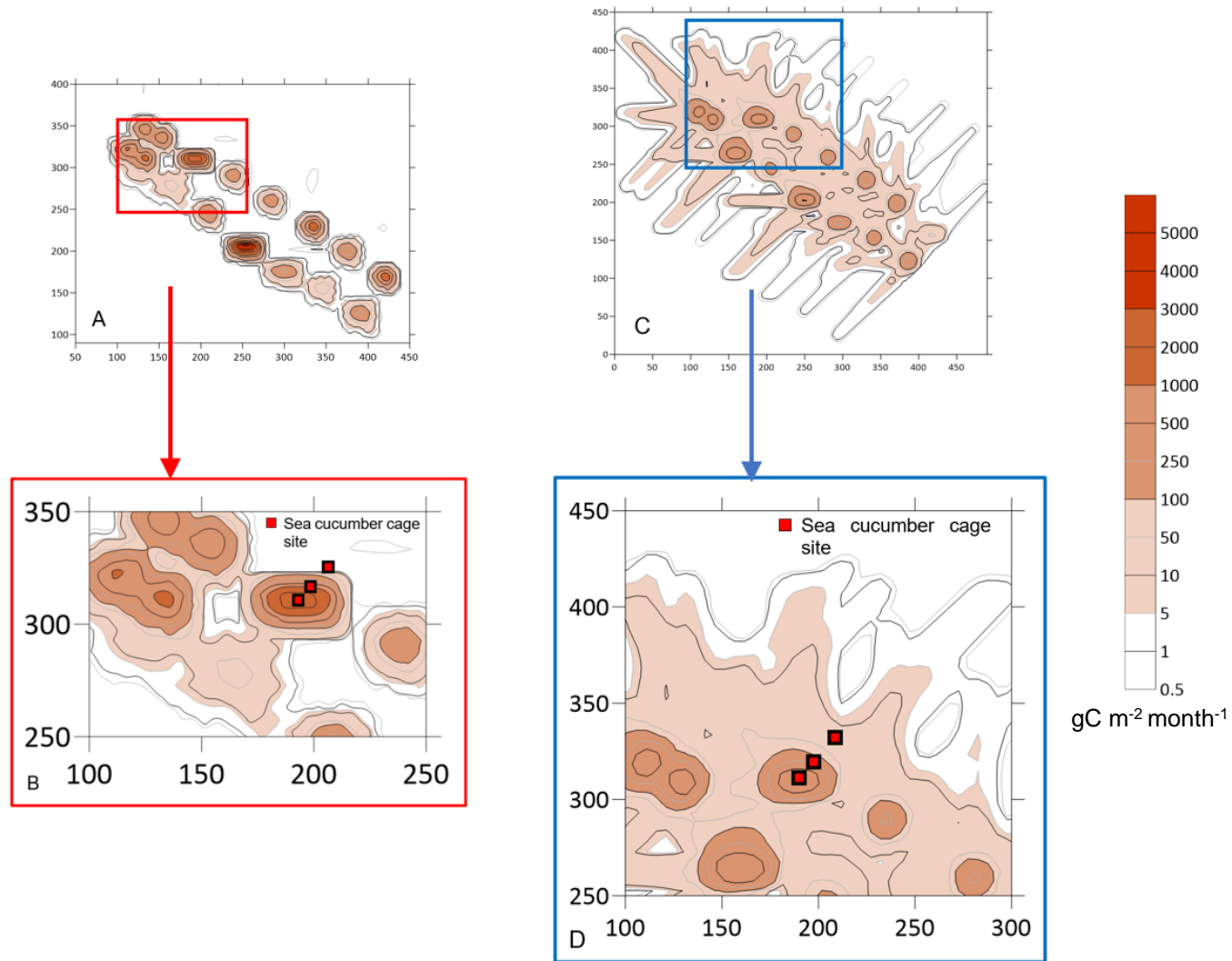


Figure 2. Modelled contour plot in 5m x 5m grid resolution for carbon waste deposition ($\text{g m}^{-2} \text{month}^{-1}$) at the study site. Plot for deposition from A. all cages on the fish farm and B. fish cage used for co-culture of *Holothuria poli* in May 2018. C. Plot for deposition from all cages on the fish farm and D. fish cage used for co-culture of *Holothuria poli* in June 2018.

Table 1. Methods of analyses used to assess near-bottom water quality parameters

Parameters	Abbr.	Unit	Principal analytical method	Standard methodology	Limit of detection (LOD)
Ammonium Nitrogen	N-NH ₄ ⁺	μmol L ⁻¹	Spectrophotometry	APAT CNR IRSA 4030 A1 Man 29 2003	0.03
Nitrate	N-NO ₃ ⁻	μmol L ⁻¹	Spectrophotometry	APAT CNR IRSA 4040 A2 Man 29 2003	0.03
Nitrite	N-NO ₂ ⁻	μmol L ⁻¹	Spectrophotometry	APAT CNR IRSA 4050 Man 29 2003	0.03
Total Phosphorus	TP	μmol L ⁻¹	Spectrophotometry	APAT CNR IRSA 4110 A2 Man 29 2003	0.03
Total Suspended Solids	TSS	mg L ⁻¹	Gravimetry	APAT CNR IRSA 2090 B Man 29 2003	0.01

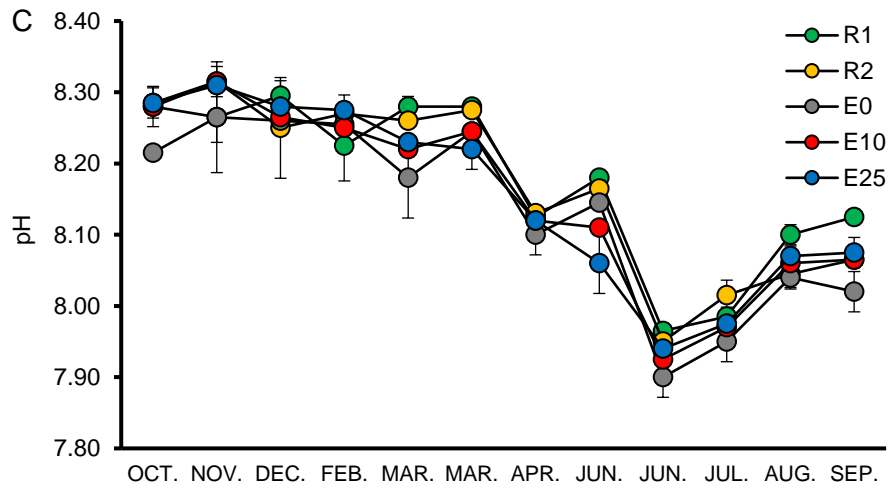
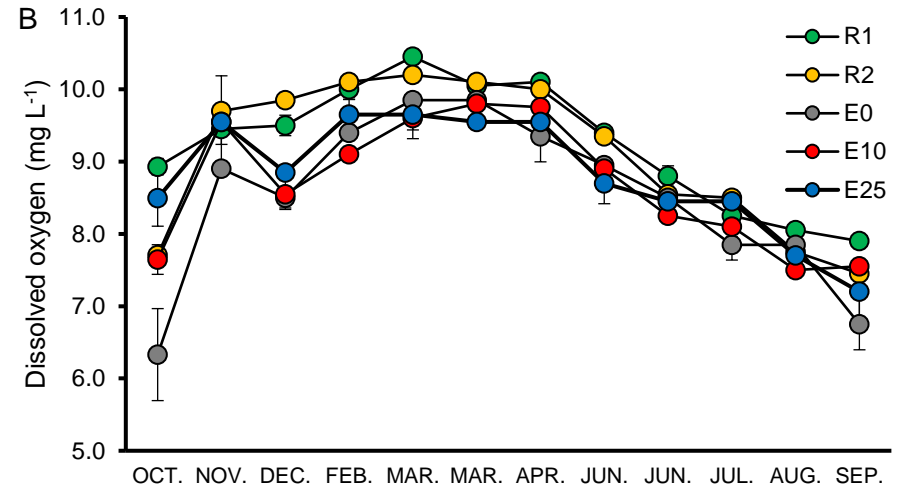
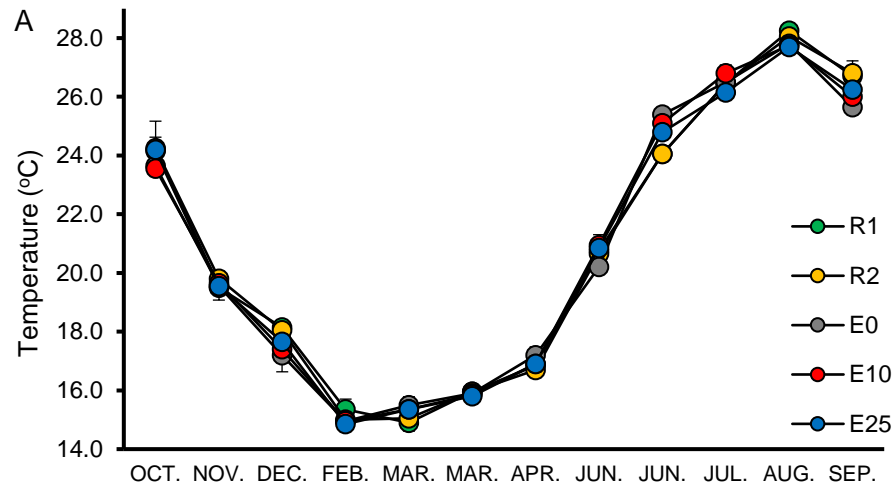
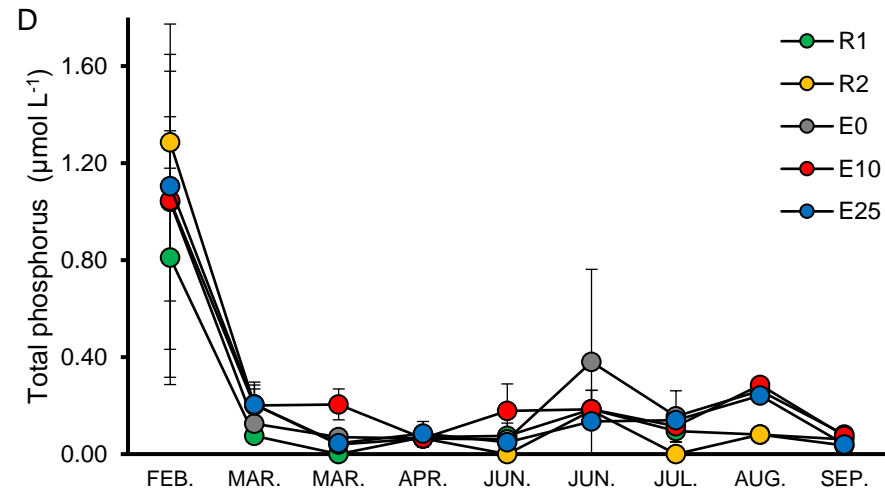
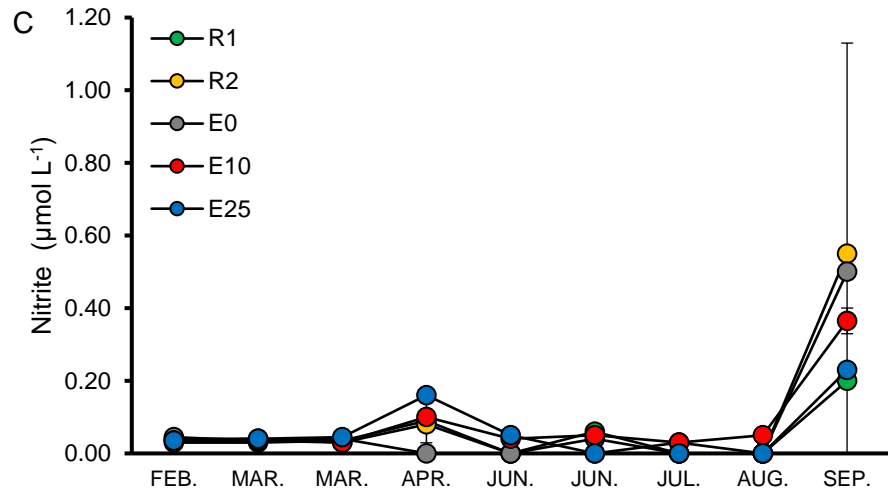
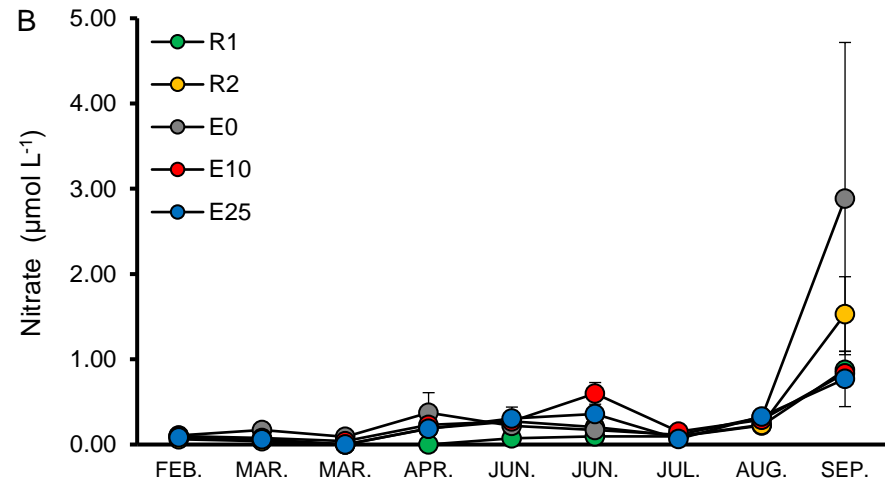
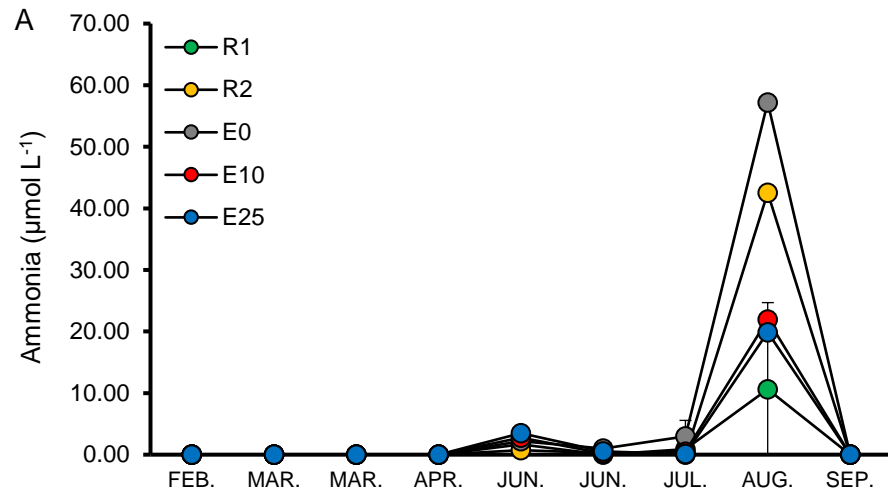


Figure 3. Temporal variation in near-bottom A. temperature, B. dissolved oxygen levels and C. pH, close to fish cages at E0, E10 and E25, and at reference sites R1 and R2. Values are given as mean \pm SD ($n = 2$). Error bars plotted for standard deviation.



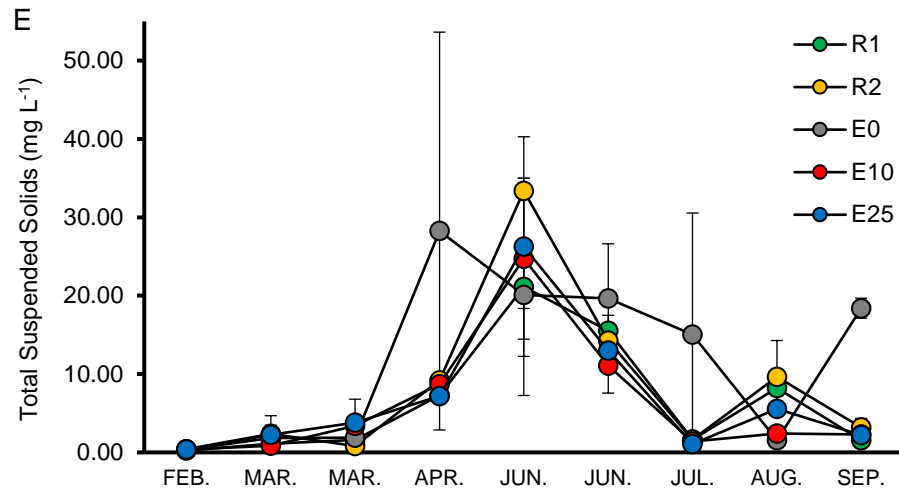


Figure 4. Temporal variation in near-bottom levels of A. ammonia, B. nitrate, C. nitrite, D. total phosphorus, and E. total suspended solids, close to fish cages at E0, E10 and E25, and at reference sites R1 and R2. Values are given as mean \pm SD ($n = 2$). Error bars plotted for standard deviation.

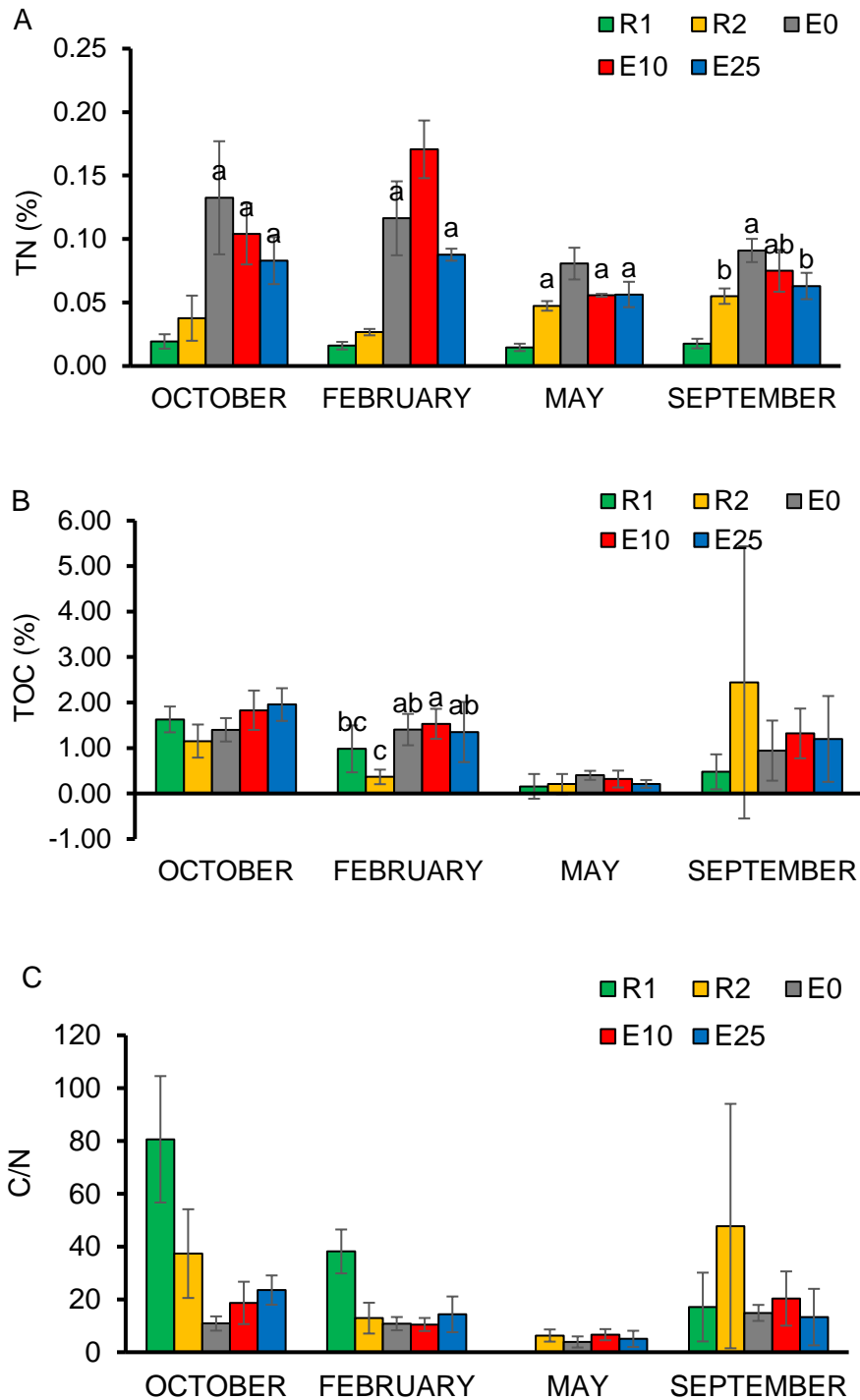


Figure 5. Temporal variation in the contents of A. total nitrogen (TN), B. total organic carbon (TOC) and C. weight ratio of carbon to nitrogen (C/N) in the surficial sediments (0-3 cm) close to fish cages at E0, E10 and E25, and at reference sites R1 and R2. Values are given as mean \pm SD ($n = 3$). Error bars plotted for standard deviation. Different superscript labels indicate a significant difference ($p < 0.05$) between data for sites at the same sampling time.

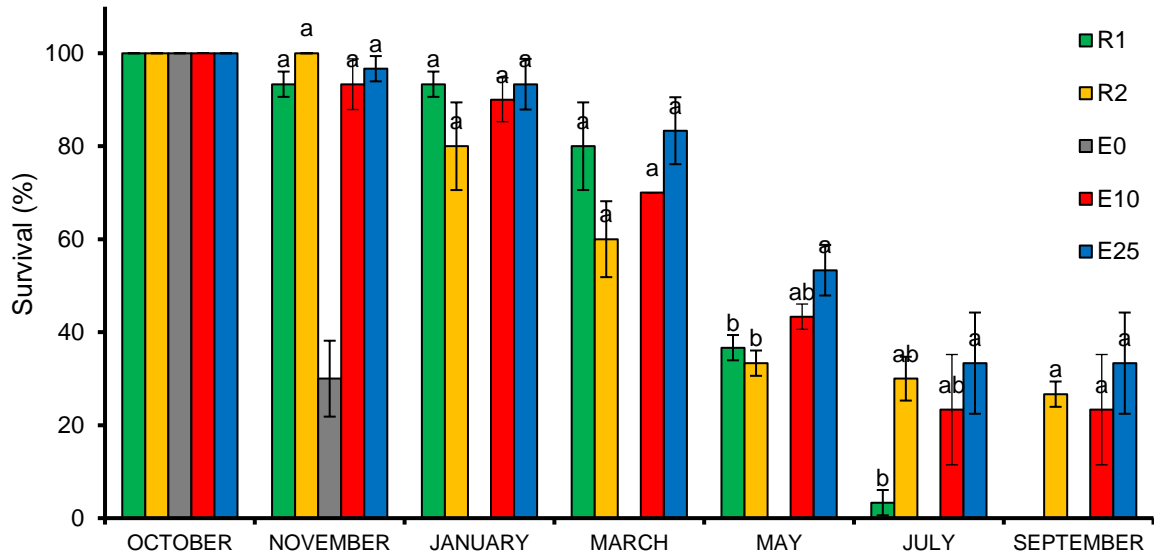


Figure 6. Percentage survival of *Holothuria poli* deployed at different IMTA (E0, E10 and E25) and reference (R1 and R2) sites over 12 months, between October 2018 (on deployment) and September 2019. Average survival for each site based on cage mean values. Standard deviation ($n = 3$) is represented by error bars. Different superscript labels indicate a significant difference ($p < 0.05$) between data for sites at the same sampling time.

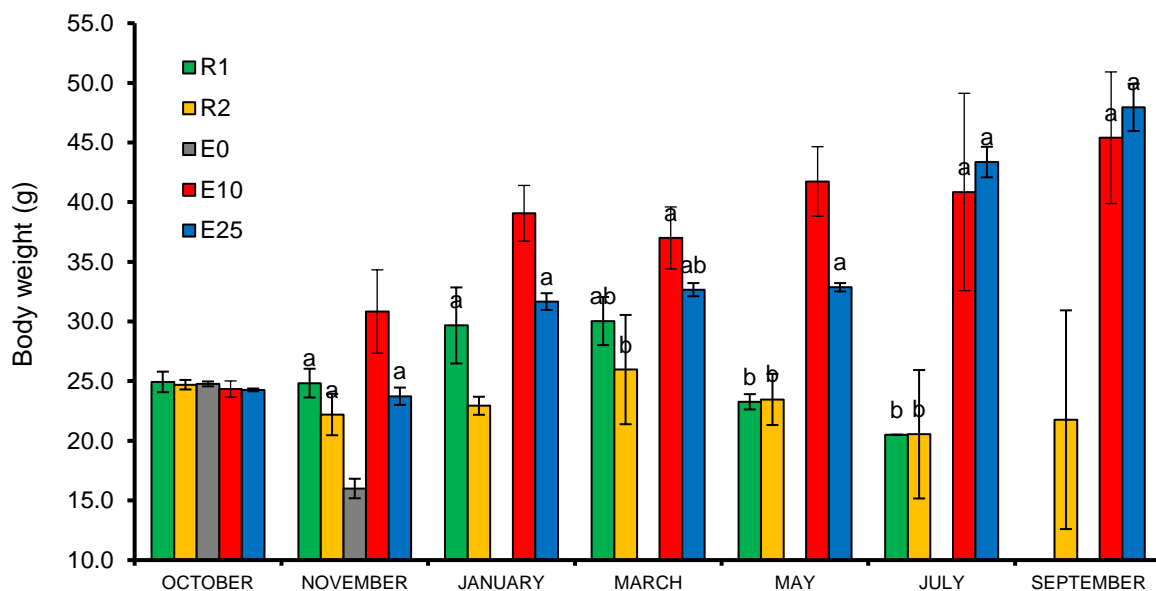


Figure 7. Mean wet body weight of *Holothuria poli* deployed at different IMTA (E0, E10 and E25) and reference (R1 and R2) sites over 12 months, between October 2018 (on deployment)

and September 2019. Average weight for each site based on cage mean values. Standard deviation ($n = 3$) is represented by error bars. Zero values are not included. Different superscript labels indicate a significant difference ($p < 0.05$) between data for sites at the same sampling time.

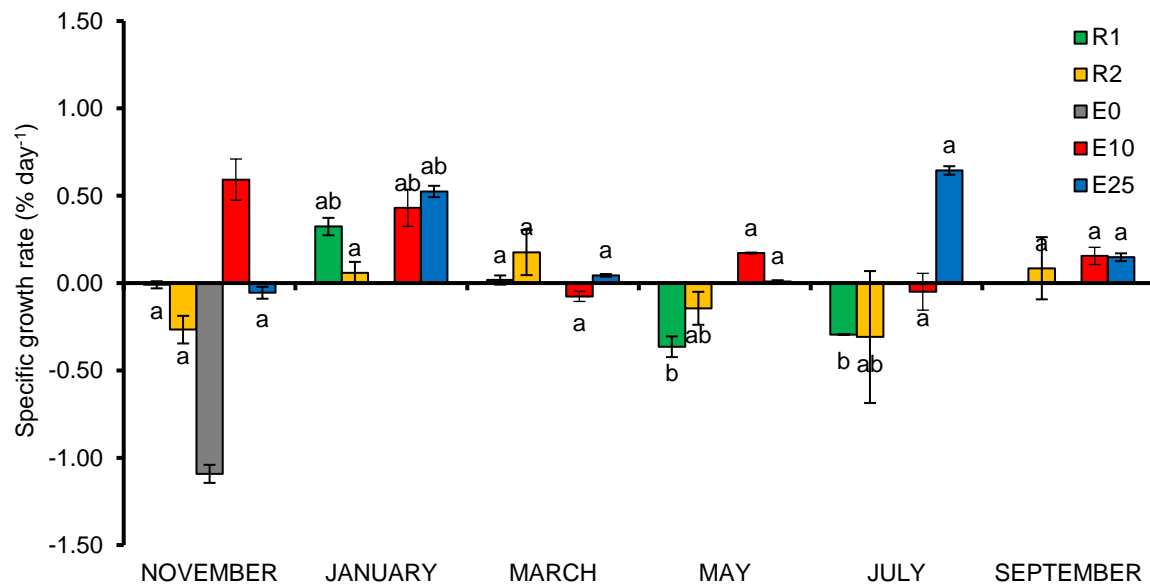


Figure 8. Specific growth rate of *Holothuria poli* deployed at different IMTA (E0, E10 and E25) and reference sites (R1 and R2) between successive sampling periods from October 2018 (on deployment) to September 2019. Average growth rates per site based on cage mean values. Standard error is represented ($n = 3$) by error bars. Zero values are not included. Different superscript labels indicate a significant difference ($p < 0.05$) between data for sites at the same sampling time.